



Government Gazette Staatskoerant

REPUBLIC OF SOUTH AFRICA
REPUBLIEK VAN SUID AFRIKA

Vol. 633

28 March
Maart 2018

No. 41545

N.B. The Government Printing Works will not be held responsible for the quality of "Hard Copies" or "Electronic Files" submitted for publication purposes

ISSN 1682-5843



9 771682 584003

41545



AIDS HELPLINE: 0800-0123-22 Prevention is the cure

IMPORTANT NOTICE:

THE GOVERNMENT PRINTING WORKS WILL NOT BE HELD RESPONSIBLE FOR ANY ERRORS THAT MIGHT OCCUR DUE TO THE SUBMISSION OF INCOMPLETE / INCORRECT / ILLEGIBLE COPY.

No FUTURE QUERIES WILL BE HANDLED IN CONNECTION WITH THE ABOVE.

Contents

<i>No.</i>		<i>Gazette No.</i>	<i>Page No.</i>
GOVERNMENT NOTICES • GOEWERMENTSKENNISGEWINGS			
Transport, Department of/ Vervoer, Departement van			
397	South African National Roads Agency Limited and National Roads Act (7/1998): Huguenot, Vaal River, Great North, Tsitsikamma, South Coast, North Coast, Mariannhill, Magalies, N17 and R30/R730/R34 Toll Roads: Publication of the amounts of toll for the different categories of motor vehicles, and the date and time from which the toll tariffs shall become payable.....	41545	4
397	Suid-Afrikaanse Nasionale Padagentskap Beperk en Nasionale Paaie Wet (7/1998): Hugenote, Vaalrivier, Verre Noord, Tsitsikamma, Suidkus, Noordkus, Mariannhill, Magalies, N17 en R30/R730/R34 tolpaai: Publikasie van die tolbedrae vir die verskillende kategorieë van motorvoertuie, en die datum en tyd vanaf die tolbedrae betaalbaar word.....	41545	18
398	South African National Roads Agency Limited and National Roads Act (7/1998): National Route 4: Hans Strydom Interchange (Pretoria) to the Gauteng/Mpumalanga Border and Maputo Development Corridor Toll Roads: Publication of the Amounts of toll for the different categories of motor vehicles, and the date and time from which the toll tariffs shall become payable.....	41545	32
398	Suid-Afrikaanse Nasionale Padagentskap Beperk en Nasionale Paaie Wet (7/1998): Nasionale Roete 4: Hans Strydom Wisselaar (Pretoria) na die Gauteng/Mpumalanga Grens en Maputo Ontwikkeling Korridor Tolpaai: Publikasie van die tolbedrae vir die verskillende kategorieë van motorvoertuie, en die datum vanaf die tolbedrae betaalbaar word.....	41545	36
399	South African National Roads Agency Limited and National Roads Act (7/1998): National Routes 1 and 4: Platinum Toll Road: Publication of the Amounts of toll for the Different Categories of Motor Vehicles, and the date and time from which the Toll Tariffs shall become payable.....	41545	40
399	Suid-Afrikaanse Nasionale Padagentskap Beperk en Nasionale Paaie Wet (7/1998): Nasionale Roetes 1 en 4: Platinum Tolpad: Publikasie van die tolbedrae vir die verskillende kategorieë van Motorvoertuie, en die datum en tyd vanaf die tolbedrae betaalbaar word.....	41545	44
400	South African National Roads Agency Limited and National Roads Act (7/1998): National Route 3: Cedara to Heidelberg Gauteng Toll Road: Publication of the amounts of toll for the different categories of motor vehicles, and the date and time from which the toll tariffs shall become payable.....	41545	48
400	Suid-Afrikaanse Nasionale Padagentskap Beperk en Nasionale Paaie Wet (7/1998): Nasionale Roete 3: Cedara tot Heidelberg Gauteng Tolpad: Publikasie van die tolbedrae vir die verskillende kategorieë van motorvoertuie, en die datum en tyd vanaf die tolbedrae betaalbaar word.....	41545	52
401	South African National Roads Agency Limited and National Roads Act (7/1998): Gauteng Freeway Improvement Project, Toll Roads: Publication of Tolls.....	41545	56
401	Wet op die Suid-Afrikaanse Nasionale Padagentskap Beperk en Nasionale Paaie (7/1998): Gauteng Deurpad Verbeteringsprojek, Tolpaai: Publikasie van Tol.....	41545	69

GOVERNMENT NOTICES • GOEWERMENTSKENNISGEWINGS

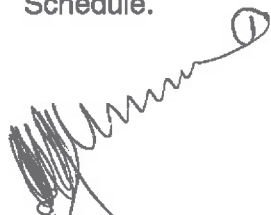
DEPARTMENT OF TRANSPORT

NO. 397

28 MARCH 2018

THE SOUTH AFRICAN NATIONAL ROADS AGENCY SOC LIMITED**HUGUENOT, VAAL RIVER, GREAT NORTH, TSITSIKAMMA, SOUTH COAST, NORTH COAST, MARIANHILL, MAGALIES, N17 AND R30/R730/R34 TOLL ROADS: PUBLICATION OF THE AMOUNTS OF TOLL FOR THE DIFFERENT CATEGORIES OF MOTOR VEHICLES, AND THE DATE AND TIME FROM WHICH THE TOLL TARIFFS SHALL BECOME PAYABLE**

The Head of the Department hereby, in terms of section 28(4) read with section 27(3) of The South African National Roads Agency Limited and National Roads Act, 1998 (Act No. 7 of 1998) [the Act], makes known that the amounts of toll to be levied in terms of section 27(1)(b) of the Act at the toll plazas located on the Huguenot, Vaal River, Great North, Tsitsikamma, South Coast, North Coast, Mariannhill, Magalies, N17 and R30/R730/R34 Toll Roads, and the date and time from which the amounts of toll shall become payable, have been determined by the Minister of Transport in terms of section 27(3)(a) of the Act, and that the said amounts shall be levied in terms of section 27(3)(b) and (d) of the Act, as set out in the Schedule.



Mr Mathabatha Mokonyama
ACTING DIRECTOR-GENERAL: TRANSPORT

SCHEDULE**1. DEFINITIONS**

The following words and expressions shall have the meanings stated, unless the context otherwise indicates.

- 1.1 “**Abnormal vehicle**” means a motor vehicle exceeding the legal dimensions as described in the Road Traffic Act, 1996 (Act No. 93 of 1996), as amended, or in any other law.
- 1.2 “**Axle**” means a device or set of devices, whether continuous across the width of the vehicle or not, about which the wheels of the vehicle rotate and which is so placed that, when the vehicle is travelling straight ahead, the vertical centre-lines of such wheels are in one vertical plane at right angles to the longitudinal centre-line of such vehicle. Axle shall also include an axle that is lifted and of which the wheels are not in contact with the road surface.
- 1.3 “**Heavy axle**” means an axle the wheels of which are fitted with tyres of a size (bead seat diameter) greater than 406,4 millimetres (16 inches), or an axle with more than two (2) wheels irrespective of tyre size, but excluding any axle of a motorcycle, a motor tricycle or a motor car.
- 1.4 “**Heavy vehicle**” means a motor vehicle with at least one heavy axle and/or any vehicle which is principally designed or adapted for the conveyance of persons exceeding sixteen (16) in number.
- 1.5 “**Light delivery vehicle**” means a motor vehicle designed or adapted for the conveyance of persons and freight with no heavy axle as defined in paragraph 1.3 above.
- 1.6 “**Light vehicle**” means a motor vehicle, other than a heavy vehicle.
- 1.7 “**Motor car**” means a motor vehicle, other than a motorcycle or a motor tricycle, designed or adapted solely or principally for the conveyance of persons not exceeding sixteen (16) in number, but excluding any vehicle with an axle with more than two (2) wheels irrespective of tyre size.
- 1.8 “**Motorcycle**” means a motor vehicle that has two wheels and includes any such vehicle having a side-car attached thereto.
- 1.9 “**Motor tricycle**” means a motor vehicle, other than a motorcycle with a side-car, which has three wheels and which is designed to be driven by means of the type of controls usually fitted to a motorcycle.
- 1.10 “**Motor vehicle**” means an entity comprising of one or more mechanically/electrically powered units with or without any trailer(s) physically joined by means of tow bars, tow ropes or mechanical articulation, and includes, inter alia:
- (a) a motorcycle;
 - (b) a motor tricycle;
 - (c) a motor car;
 - (d) a vehicle which has pedals and a mechanically/electrically powered unit as an integral part thereof or attached thereto and which is designed or adapted to be propelled by means of either such pedals or such mechanical/electrical unit or both; and
 - (e) a light delivery vehicle (a bakkie).

- 1.11 **“Trailer”** means a vehicle which is not self-propelled and which is designed or adapted to be drawn by a motor vehicle but does not include a side-car attached to a motorcycle.

2. CATEGORIES OF MOTOR VEHICLES

Class 1: *Light vehicles:*

Light vehicles are motor vehicles, other than heavy vehicles as defined above, with or without a trailer, and include motorcycles, motor tricycles and motor cars.

Class 2: *Medium heavy vehicles:*

Medium heavy vehicles are heavy vehicles, as defined above, with two axles.

Class 3: *Large heavy vehicles:*

Large heavy vehicles are heavy vehicles, as defined above, with three or four axles.

Class 4: *Extra large heavy vehicles:*

Extra large heavy vehicles are heavy vehicles, as defined above, with five or more axles.

3. TOLL TARIFF

3.1 The amounts of toll for the different categories of motor vehicles, payable at the toll plazas located on the Huguenot, Vaal River, Great North, Tsitsikamma, South Coast, North Coast, Mariannhill, Magalies, N17 and R30/R730/R34 Toll Roads, for the usage of the toll road, or any part thereof, are stated in Table 1.

TABLE 1: TOLL TARIFF						
TOLL ROAD	PLAZA		CLASS 1	CLASS 2	CLASS 3	CLASS 4
N1 Huguenot	Huguenot	Mainline	R38.00	R105.00	R164.00	R266.00
N1 Vaal River	Verkeerdevlei	Mainline	R54.50	R109.00	R164.00	R230.00
	Vaal	Mainline	R63.50	R120.00	R144.00	R192.00
	Grasmere	Mainline	R19.00	R57.00	R67.00	R88.00
		Ramp (S)	R10.00	R29.00	R34.00	R44.00
		Ramp (N)	R10.00	R28.00	R33.00	R44.00
N1 Great North	Kranskop	Mainline	R43.00	R109.00	R146.00	R179.00
		Ramp	R12.00	R32.00	R38.00	R56.00
	Nyl	Mainline	R55.50	R104.00	R125.00	R168.00
		Ramp	R17.00	R32.00	R38.00	R48.00
	Sebetiela	Ramp	R17.00	R32.00	R40.00	R54.00
	Capricorn	Mainline	R44.50	R122.00	R142.00	R178.00
	Baobab	Mainline	R43.00	R117.00	R161.00	R194.00
N2 Tsitsikamma	Tsitsikamma	Mainline	R50.50	R127.00	R305.00	R431.00
		Ramp	R50.50	R127.00	R305.00	R431.00
N2 South Coast	Izotsha	Ramp	R9.00	R16.00	R22.00	R38.00
	Oribi	Mainline	R28.50	R50.00	R70.00	R113.00
		Ramp (S)	R13.00	R24.00	R32.00	R51.00
		Ramp (N)	R15.50	R27.00	R38.00	R70.00
	Umtentweni	Ramp	R12.00	R21.00	R30.00	R48.00
N2 North Coast	King Shaka Airport	Ramp	R6.00	R12.00	R18.00	R24.00
	oThongathi	Mainline	R11.00	R23.00	R30.00	R43.00
		Ramp (S)	R5.50	R12.00	R15.00	R22.00
		Ramp (N)	R5.50	R12.00	R15.00	R22.00
	Mvoti	Mainline	R13.00	R36.00	R49.00	R73.00
	Mandini	Ramp	R7.00	R13.00	R16.00	R22.00
	Dokodweni	Ramp	R19.00	R37.00	R43.00	R59.00
	Mtunzini	Mainline	R44.50	R85.00	R101.00	R151.00
		Ramp (S)	R37.00	R69.00	R83.00	R120.00
	Ramp (N)	R8.00	R16.00	R19.00	R32.00	
N3 Mariannhill	Mariannhill	Mainline	R11.50	R21.00	R26.00	R40.00
N4 Magalies	Pelindaba	Mainline	R5.50	R11.00	R15.00	R19.00
	Quagga	Mainline	R4.50	R8.00	R11.00	R15.00
N17	Gosforth	Mainline	R12.00	R32.00	R35.00	R48.00
		Ramp (W)	R6.50	R13.00	R18.00	R23.00
		Ramp (E)	R5.50	R20.00	R22.00	R30.00
	Dalpark	Mainline	R11.00	R23.00	R30.00	R40.00
	Denne	Ramp	R9.50	R19.00	R24.00	R32.00
	Leandra	Mainline	R35.00	R88.00	R132.00	R176.00
		Ramp	R21.00	R53.00	R79.00	R106.00
	Trichardt	Mainline	R17.50	R44.00	R67.00	R88.00
	Ermelo	Mainline	R31.50	R79.00	R118.00	R157.00
R30/R730/R34	Brandfort	Mainline	R43.50	R87.00	R131.00	R184.00

4. LOCAL USER TOLL TARIFF

- 4.1 A local user toll tariff, for different categories of motor vehicles, is granted, subject to the South African National Roads Agency SOC Limited's (SANRAL) terms and conditions (available at the Toll Plazas), to registered *bona fide* residents, employers or employees, located within an approved local user area, on successful application to the appropriate toll operator.
- 4.2 The local user toll tariffs for the local user areas, as shown on the various maps attached to this Notice and of which a copy can be obtained from SANRAL, for the different categories of motor vehicles, payable at the Veerkeerdevlei, Grasmere, Capricorn, Baobab, Tsitsikamma, Leandra, Trichardt, Ermelo and Brandfort Toll Plazas, located on the Vaal River, Great North, Tsitsikamma, N17 and R30/R730/R34 Toll Roads are stated in Table 2.

TOLL ROAD	PLAZA	LOCAL USER AREA	CLASS 1	CLASS 2	CLASS 3	CLASS 4
N1 Vaal River	Verkeerdevlei Mainline	Verkeerdevlei	R16.50	R33.00	R50.00	R66.00
	Grasmere Mainline	Evaton Sebokeng Vanderbijlpark	R3.00	-	-	-
	Ramp (S)	Ennerdale Lenasia South	R1.80	-	-	-
	Ramp (N)	Ennerdale Lenasia South	R1.80	-	-	-
N1 Great North	Capricorn Mainline	Capricorn	R12.50	R25.00	R32.00	R44.00
	Baobab Mainline	Baobab	R14.50	R36.00	R50.00	R64.00
	Baobab Mainline	Tshipise	R21.50	R54.00	R76.00	R97.00
N2 Tsitsikamma	Tsitsikamma Mainline Ramp	Tsitsikamma	R15.00	-	-	-
	Mainline Ramp	Nature's Valley Coldstream	R7.50	-	-	-
N17	Leandra Mainline	Leandra	R21.00	R53.00	R80.00	R106.00
	Ramp	Leandra	R12.50	R32.00	R48.00	R64.00
	Trichardt Mainline	Trichardt	R9.00	R22.00	R34.00	R44.00
	Ermelo Mainline	Ermelo	R15.50	R41.00	R59.00	R79.00
R30/R730/R34	Brandfort Mainline	Area A	R4.40	R8.50	R14.00	R19.00
		Area B	R8.50	R17.00	R27.00	R37.00
		Area C	R17.50	R35.00	R53.00	R74.00

- 4.3 The local user toll tariffs for the local user area, for the different categories of motor vehicles, payable at the Mvoti Toll Plaza located on the North Coast Toll Road are stated in Table 3.

TOLL ROAD	PLAZA	LOCAL USER AREA	CLASS 1	CLASS 2	CLASS 3	CLASS 4
N2 North Coast	Mvoti Mainline	KwaDukuza	R3.80	R9.00	R14.00	R19.00
N2 North Coast	Dokodweni Ramp	Mandeni Local Municipality wards 1, 2, 3, 8 and 9	R2.80	R5.50	R7.00	R9.00

5. LOCAL PUBLIC TRANSPORT OPERATOR TOLL TARIFF

- 5.1 A local public transport operator toll tariff, for Class 1 motor vehicles only, is granted, subject to SANRAL's terms and conditions (available at the Toll Plazas), to registered *bona fide* local public transport operators operating within an approved local user area, on successful application to the appropriate toll operator.
- 5.2 The local public transport operator toll tariffs for the local user areas, as shown on the various maps attached to this Notice and of which a copy can be obtained from SANRAL, for Class 1 motor vehicles only, payable at the Veerkeerdevlei, Capricorn, Baobab and Brandfort Toll Plazas located on the Vaal River, Great North and R30/R730/R34 Toll Roads, are stated in Table 4.

TOLL ROAD	PLAZA		LOCAL USER AREA	CLASS 1
N1 Vaal River	Verkeerdevlei	Mainline	Verkeerdevlei	R16.50
N1 Great North	Capricorn	Mainline	Capricorn	R12.50
	Baobab	Mainline	Baobab	R13.50
R30/R730/R34	Brandfort	Mainline	Areas A, B & C	R8.50

6. FREQUENT USER DISCOUNT

- 6.1 At specified toll plazas, a frequent user discount on the toll tariff, for Class 1 motor vehicles only, is granted, subject to SANRAL's terms and conditions (available at the Toll Plazas), to registered frequent users who complete a prescribed number of passages within a stipulated period, on successful application to the appropriate toll operator. At some of the specified toll plazas, a registered *bona fide* local user and registered *bona fide* local public transport operator may also register as a frequent user. The frequent user discount, according to the number of passages completed within the stipulated period, is either applied to the value of the total number of passages, or to the specific range of trips.

A Frequent User Card must be tendered for payment at a toll plaza – a Local User Card, Local Public Transport Operator Card, valid Credit Card (e.g. Visa or Master Card), or valid Fleet Management Card, may be registered as a Frequent User Card.

- 6.2 The frequent user discounts for the specified toll plazas located on the Huguenot, Vaal River, Great North, South Coast, North Coast, Mariannhill, Magalies, N17 and R30/R730/R34 Toll Roads, for Class 1 motor vehicles only, for the number of passages completed within the stipulated period, on the toll tariffs stated in the relevant tables, are stated in Tables 5.1 and 5.2.

TOLL ROAD	PLAZA		CALENDAR MONTH	DISCOUNT FOR THE NO. OF PASSAGES		TOLL TARIFF TABLE
				20%*	40%*	
N1 Huguenot	Huguenot	Mainline	1	20 to 39	40 and more	1

Category	Location	Type	Count	Range 1	Range 2	Discount
N1 Vaal River	Verkeerdevlei	Mainline	1	20 to 39	40 and more	1, 2 and 4
	Grasmere	Mainline	1	20 to 39	40 and more	1
N1 Great North	Capricorn	Mainline	1	20 to 39	40 and more	1, 2 and 4
	Baobab	Mainline	1	20 to 39	40 and more	1, 2 and 4
N2 South Coast	Izotsha	Ramp	3	20 to 39	40 and more	1
	Oribi	Mainline	3	20 to 39	40 and more	1
		Ramp (S)	3	20 to 39	40 and more	1
		Ramp (N)	3	20 to 39	40 and more	1
Umtentweni	Ramp	3	20 to 39	40 and more	1	
N2 North Coast	King Shaka Airport	Ramp	1	10 to 19	20 and more	1
	oThongathi	Mainline	1	20 to 39	40 and more	1
		Ramp (S)	1	20 to 39	40 and more	1
		Ramp (N)	1	20 to 39	40 and more	1
	Mvoti	Mainline	1	20 to 39	40 and more	1
	Mandini	Ramp	1	20 to 39	40 and more	1
	Dokodweni	Ramp	1	20 to 39	40 and more	1
	Mtunzini	Mainline	1	20 to 39	40 and more	1
Ramp (S)		1	20 to 39	40 and more	1	
Ramp (N)	1	20 to 39	40 and more	1		
N3 Mariannhill	Mariannhill	Mainline	1	20 to 39	40 and more	1
N4 Magalies	Pelindaba	Mainline	1	20 to 39	40 and more	1
	Quagga	Mainline	1	20 to 39	40 and more	1
N17	Gosforth	Mainline	1	35 to 69	70 and more	1
		Ramp (W)	1	35 to 69	70 and more	1
		Ramp (E)	1	35 to 69	70 and more	1
	Dalpark	Mainline	1	35 to 69	70 and more	1
R30/R730/R34	Brandfort	Mainline	1	20 to 39	40 and more	1, 2 and 4

*The relevant frequent user discount is applied to the value of the total number of passages completed within the stipulated period.

TOLL ROAD	PLAZA		CALENDAR MONTH	DISCOUNT FOR THE NO. OF PASSAGES		TOLL TARIFF TABLE
				Passages per month	Discount*	
N17	Leandra	Mainline	1	1 to 15	0%	1 and 2
		Ramp	1	16 to 20	40%	
	Trichardt	Mainline	1	21 to 30	55%	
	Ermelo	Mainline	1	31 and more	70%	

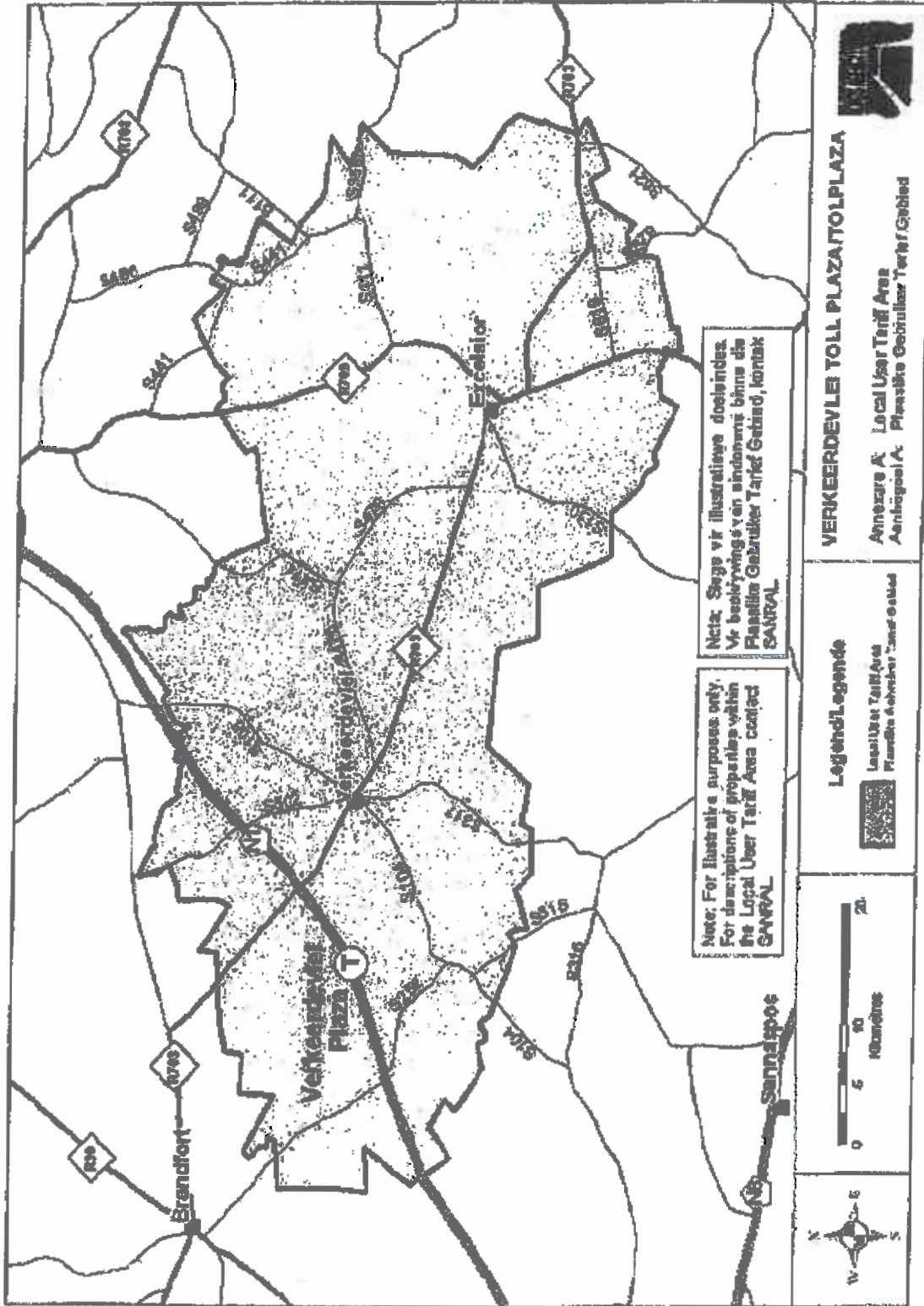
*The frequent user discount as indicated only applies on the passages undertaken in the specific "passages per month" range at a specific toll plaza.

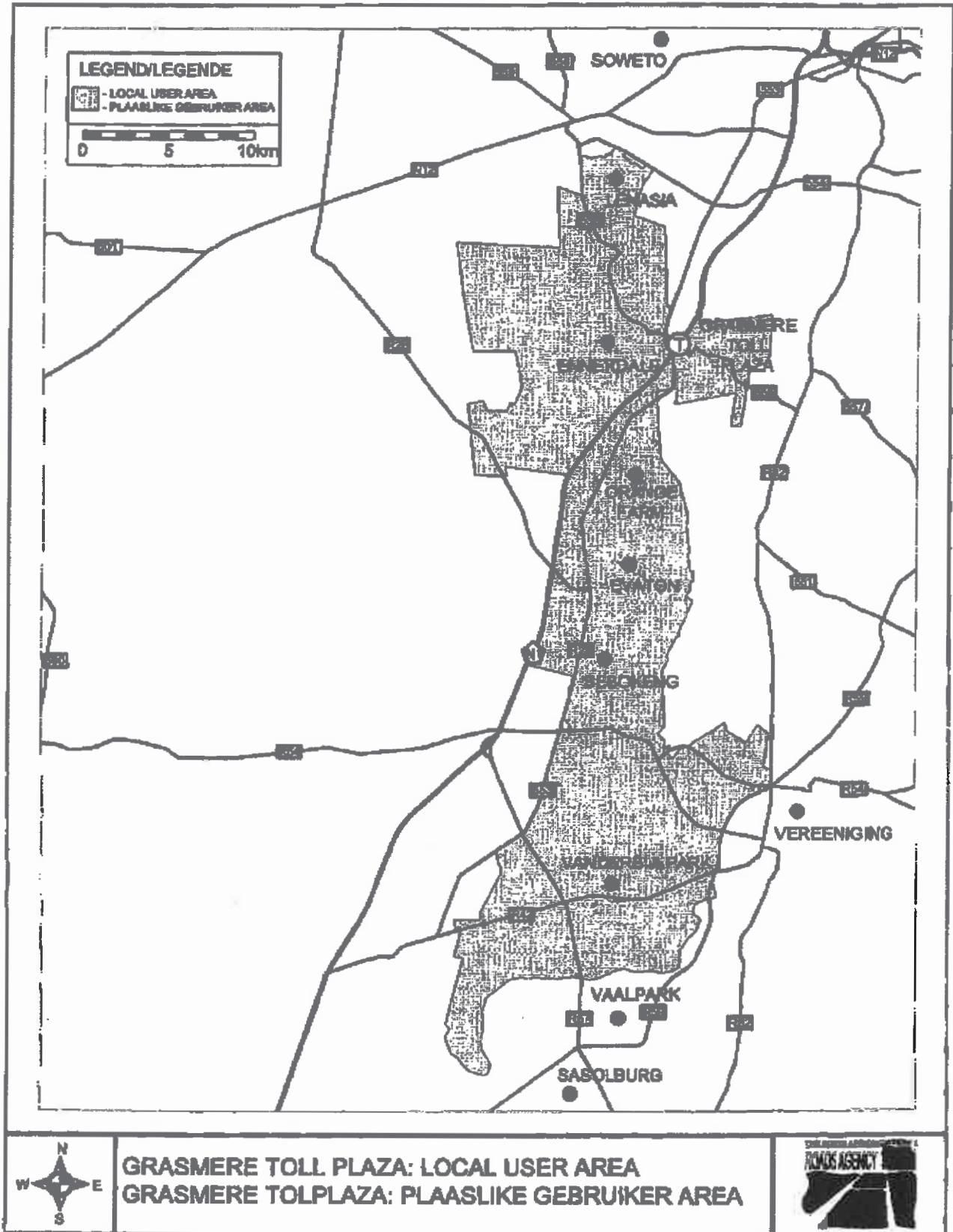
7. OPERATIONAL HOURS

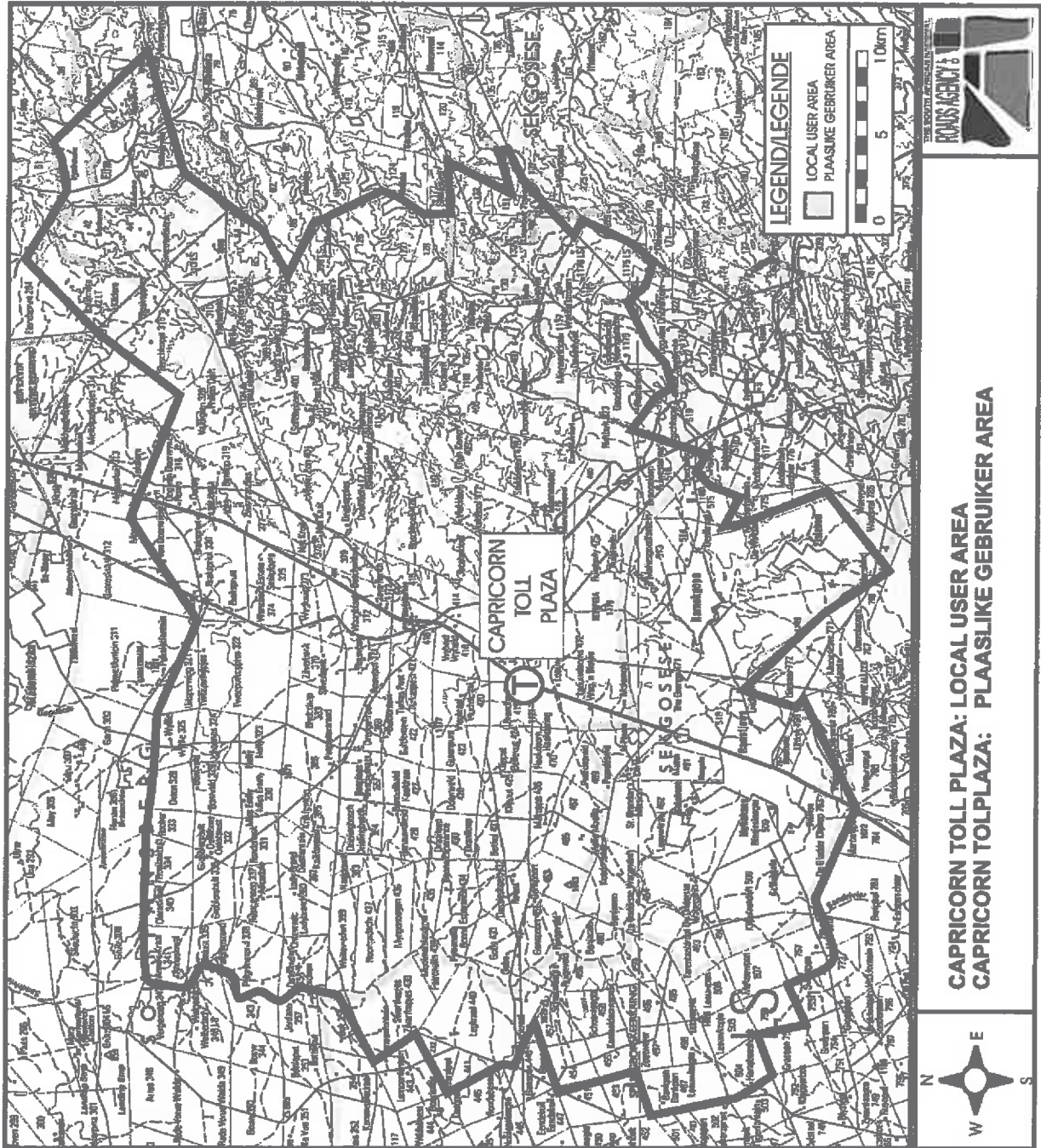
7.1 The said toll roads shall be open to traffic for 24 hours a day.

8. EFFECTIVE DATE

8.1 The date and time from which the said amounts of toll shall become payable, shall be 12 April 2018 at 00:00.

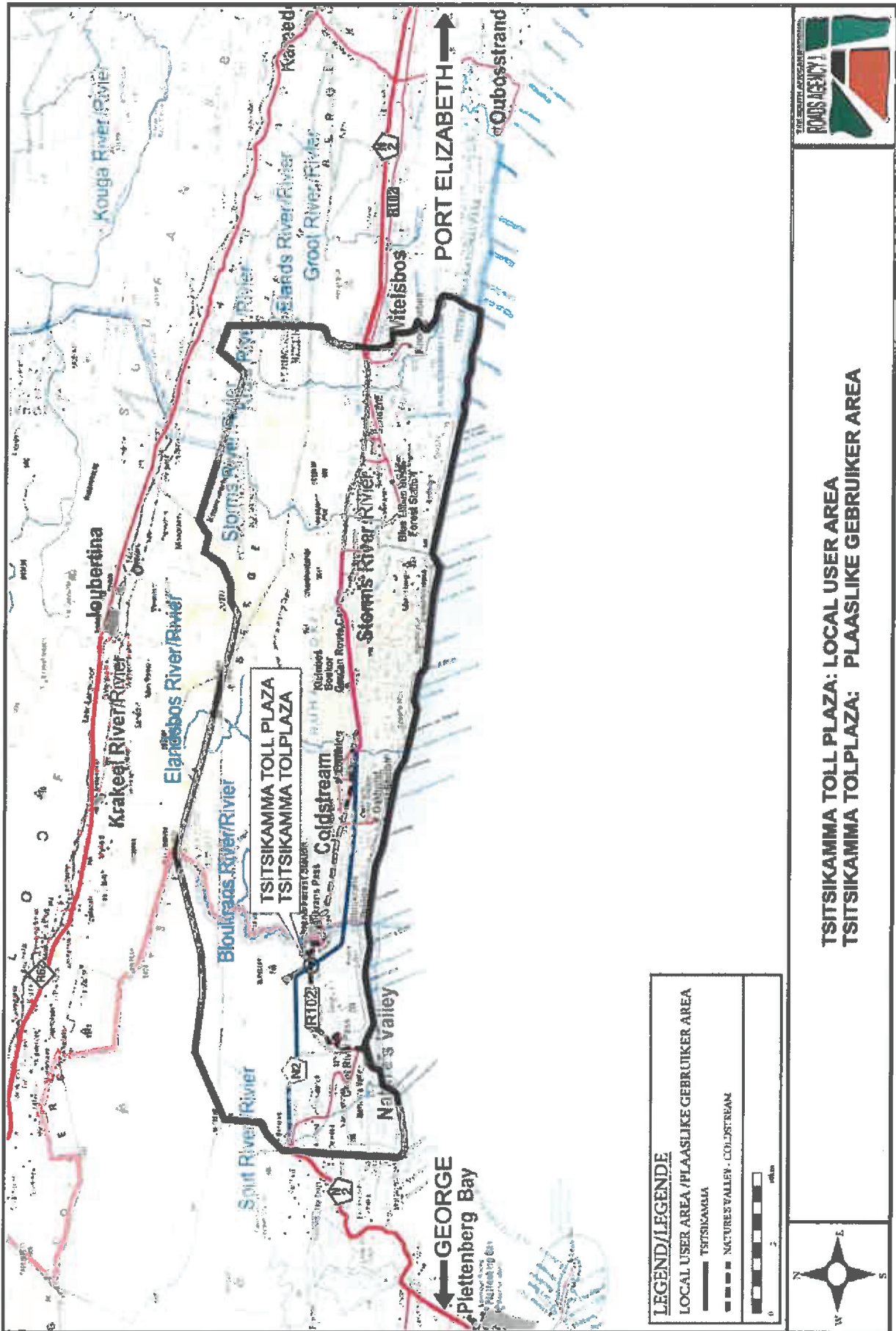


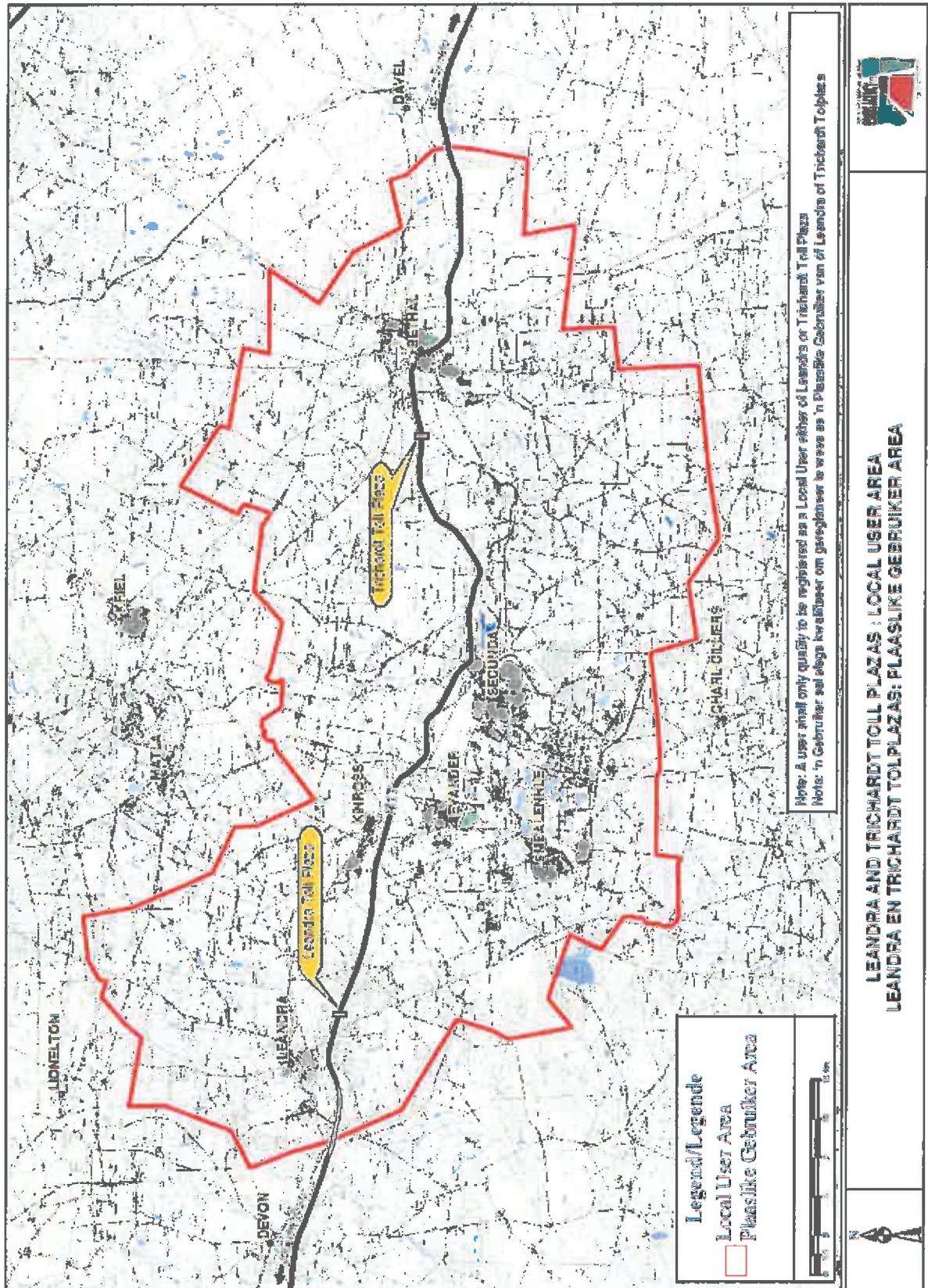




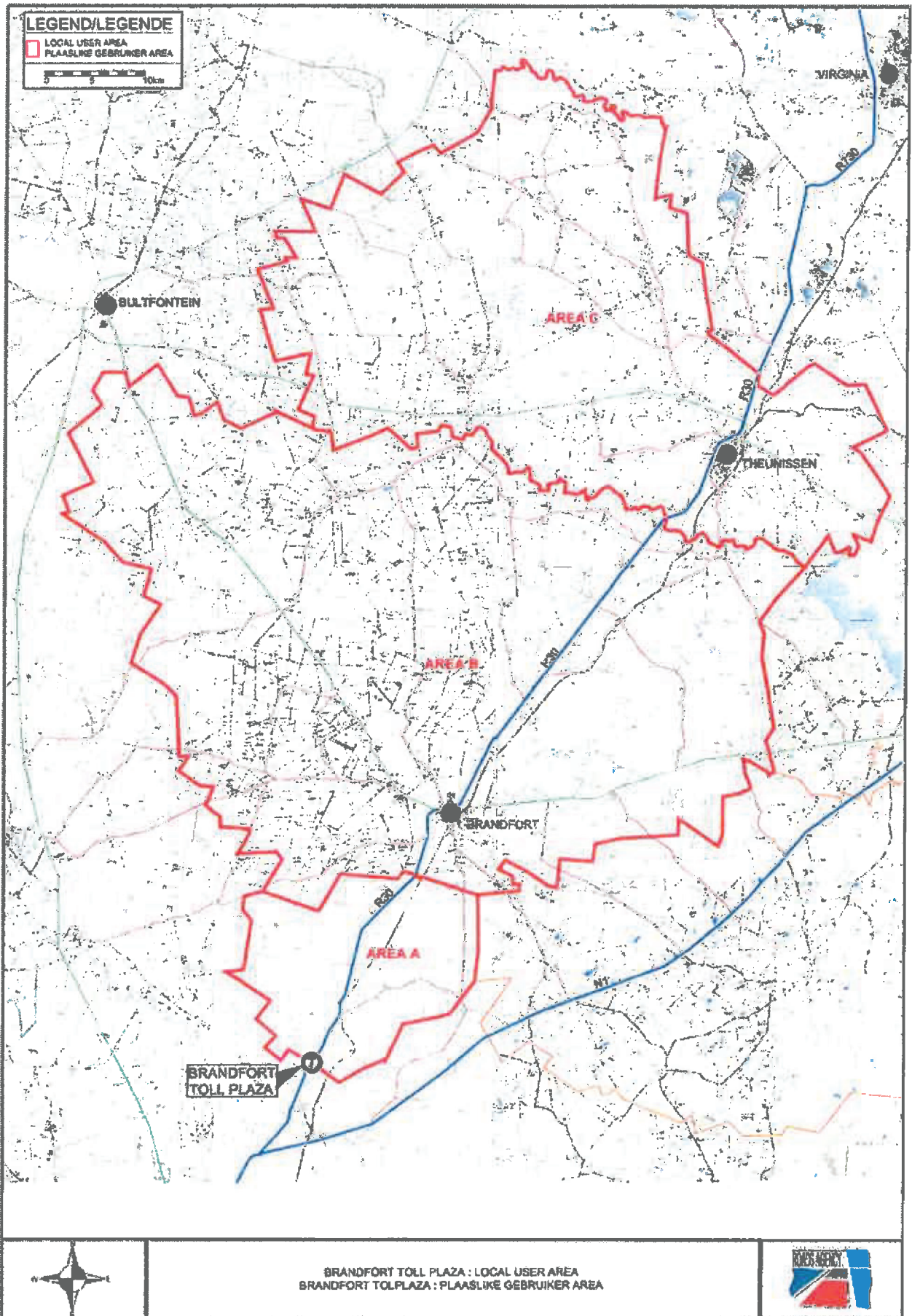
CAPRICORN TOLL PLAZA: LOCAL USER AREA
CAPRICORN TOLPLAZA: PLAASLIKE GEBRUIKER AREA







LEANDRA AND TRICHARDT TOLL PLAZAS : LOCAL USER AREA
LEANDRA EN TRICHARDT TOLPLAZAS: PLAASLIKE GEBRUIKER AREA



DEPARTEMENT VAN VERVOER

NO. 397

28 MAART 2018

DIE SUID-AFRIKAANSE NASIONALE PADAGENTSKAP MSB BEPERK**HUGENOTE, VAALRIVIER, VERRE NOORD, TSITSIKAMMA, SUIDKUS, NOORDKUS, MARIANNHILL, MAGALIES, N17 EN R30/R730/R34 TOLPAAIE: PUBLISERING VAN DIE TOLBEDRAE VIR DIE VERSKILLENDE KATEGORIEË VAN MOTORVOERTUIE, EN DIE DATUM EN TYD VANAF DIE TOLBEDRAE BETAALBAAR WORD**

Die Hoof van die Departement maak hierby, kragtens die bepalings van artikel 28(4) saamgelees met artikel 27(3) van Die Suid-Afrikaanse Nasionale Padagentskap Beperk en Nasionale Paaie Wet, 1998 (Wet Nr. 7 van 1998) [die Wet], bekend dat die tolbedrae wat kragtens artikel 27(1)(b) van die Wet gehef sal word by die tolplazas geleë op die Hugenote, Vaalrivier, Verre Noord, Tsitsikamma, Suidkus, Noordkus, Mariannhill, Magalies, N17 en R30/R730/R34 Tolpaaie, en die datum en tyd vanaf die tolbedrae betaalbaar word, kragtens artikel 27(3)(a) van die Wet, deur die Minister van Vervoer bepaal is, en dat genoemde bedrae kragtens artikel 27(3)(b) en (d) van die Wet gehef sal word, soos in die Bylae uiteengesit.



Mnr Mathabatha Mokonyama
WAARNEMENDE DIREKTEUR-GENERAAL: VERVOER

BYLAE**1. WOORDOMSKRYWINGS**

Die volgende woorde en uitdrukkings sal die betekenis hê soos uiteengesit, tensy dit uit die samehang anders blyk.

- 1.1 **“Abnormale voertuig”** beteken ‘n motorvoertuig wat die wettige afmetings, soos beskryf in die Padverkeerswet, 1996 (Wet Nr. 93 van 1996), soos gewysig, of in enige ander wet oorskry.
- 1.2 **“As”** beteken ‘n toestel of stel toestelle, hetsy onafgebroke oor die breedte van die voertuig of nie, waarom die wiele van die voertuig ronddraai en wat so geplaas is dat wanneer die voertuig reguit vorentoe ry, die vertikale hartlyne van sodanige wiele in een vertikale vlak reghoekig met die langshartlyn van sodanige voertuig is. As sal ook ‘n as insluit waarvan die wiele opgelig en nie in kontak met die padoppervlak is nie.
- 1.3 **“Swaar as”** beteken ‘n as waarvan die wiele toegerus is met bande met ‘n grootte (spanranddeursnee) groter as 406,4 millimeter (16 duim), of ‘n as met meer as twee (2) wiele, ongeag die bandgrootte, maar nie ‘n as van ‘n motorfiets, ‘n motordriewiel of ‘n motorkar nie.
- 1.4 **“Swaar voertuig”** beteken ‘n motorvoertuig met minstens een swaar as en/of ‘n motorvoertuig wat ontwerp of aangepas is uitsluitlik of hoofsaaklik vir die vervoer van meer as sestien (16) persone.
- 1.5 **“Ligte afleweringvoertuig”** beteken ‘n motorvoertuig wat ontwerp of aangepas is vir die vervoer van persone en vrag met geen swaar as soos omskryf in paragraaf 1.3 hierbo nie.
- 1.6 **“Ligte voertuig”** beteken ‘n motorvoertuig, uitgesonderd ‘n swaar voertuig.
- 1.7 **“Motorkar”** beteken ‘n motorvoertuig, uitgesonderd ‘n motorfiets of motordriewiel, wat ontwerp of aangepas is uitsluitlik of hoofsaaklik vir die vervoer van hoogstens sestien (16) persone, maar uitgesluit enige voertuig met meer as twee (2) wiele, ongeag die bandgrootte, op enige as.
- 1.8 **“Motorfiets”** beteken ‘n motorvoertuig met twee wiele en ook enige sodanige voertuig waaraan ‘n syspan geheg is.
- 1.9 **“Motordriewiel”** beteken ‘n motorvoertuig, uitgesonderd ‘n motorfiets met syspan, wat drie wiele het en ontwerp is om bestuur te word deur middel van die tipe kontroles waarmee ‘n motorfiets gewoonlik toegerus is.
- 1.10 **“Motorvoertuig”** beteken ‘n entiteit bestaande uit een of meer meganies/elektries aangedrewe eenhede met of sonder sleepwa of sleepwaens wat fisies aan mekaar gekoppel is deur middel van sleepstange, sleeptoue of meganiese geleiding en sluit onder andere in:
- (a) ‘n motorfiets;
 - (b) ‘n motordriewiel;
 - (c) ‘n motorkar;
 - (d) ‘n voertuig met pedale en met ‘n meganies/elektries aangedrewe eenheid as ‘n integreerende deel daarvan of daaraan vasgeheg en wat ontwerp of aangepas is om of deur middel van sodanige pedale of deur middel van die meganiese/elektriese eenheid of deur albei voortbeweeg te word; en
 - (e) ‘n ligte afleweringvoertuig (‘n bakkie).

- 1.11 “**Sleepwa**” beteken ‘n voertuig wat nie selfaangedrewe is nie en wat ontwerp of aangepas is om deur ‘n motorvoertuig getrek te word, maar sluit nie ‘n syspan wat aan ‘n motorfiets vasgeheg is in nie.

2. KATEGORIEë VAN MOTORVOERTUIE

Klas 1: Ligte voertuie:

Ligte voertuie is motorvoertuie, uitgesonderd swaar voertuie soos hierbo omskryf, met of sonder sleepwa, en sluit motorfietse, motordriewiele en motorkarre in.

Klas 2: Medium swaar voertuie:

Medium swaar voertuie, is swaar voertuie, soos hierbo omskryf, met twee asse.

Klas 3: Groot swaar voertuie:

Groot swaar voertuie, is swaar voertuie, soos hierbo omskryf, met drie of vier asse.

Klas 4: Ekstra groot swaar voertuie:

Ekstra groot swaar voertuie, is swaar voertuie, soos hierbo omskryf, met vyf of meer asse.

3. TOLTARIEF

- 3.1 Die tolbedrae vir die verskillende kategorieë motorvoertuie betaalbaar by die tolplazas geleë op die Hugenote, Vaalrivier, Verre Noord, Tsitsikamma, Suidkus, Noordkus, Mariannhill, Magalies, N17 en R30/R730/R34 Tolpaaie, vir die gebruik van 'n tolpad, of enige deel daarvan, is uiteengesit in Tabel 1.

TABEL 1: TOLTARIEF						
TOLPAD	PLAZA		KLAS 1	KLAS 2	KLAS 3	KLAS 4
N1 Hugenote	Huguenot	Hooflyn	R38.00	R105.00	R164.00	R266.00
N1 Vaalrivier	Verkeerdevelei	Hooflyn	R54.50	R109.00	R164.00	R230.00
	Vaal	Hooflyn	R63.50	R120.00	R144.00	R192.00
	Grasmere	Hooflyn	R19.00	R57.00	R67.00	R88.00
		Op-en Afrit (S)	R10.00	R29.00	R34.00	R44.00
		Op-en Afrit (N)	R10.00	R28.00	R33.00	R44.00
N1 Verre Noord	Kranskop	Hooflyn	R43.00	R109.00	R146.00	R179.00
		Op- en Afrit	R12.00	R32.00	R38.00	R56.00
	Nyl	Hooflyn	R55.50	R104.00	R125.00	R168.00
		Op-en Afrit	R17.00	R32.00	R38.00	R48.00
	Sebetiela	Op-en Afrit	R17.00	R32.00	R40.00	R54.00
	Capricorn	Hooflyn	R44.50	R122.00	R142.00	R178.00
	Baobab	Hooflyn	R43.00	R117.00	R161.00	R194.00
N2 Tsitsikamma	Tsitsikamma	Hooflyn	R50.50	R127.00	R305.00	R431.00
		Op-en Afrit	R50.50	R127.00	R305.00	R431.00
N2 Suidkus	Izotsha	Op-en Afrit	R9.00	R16.00	R22.00	R38.00
	Oribi	Hooflyn	R28.50	R50.00	R70.00	R113.00
		Op-en Afrit (S)	R13.00	R24.00	R32.00	R51.00
		Op-en Afrit (N)	R15.50	R27.00	R38.00	R70.00
	Umtentweni	Op-en Afrit	R12.00	R21.00	R30.00	R48.00
N2 Noordkus	King Shaka Lughawe	Oprit	R6.00	R12.00	R18.00	R24.00
	oThongathi	Hooflyn	R11.00	R23.00	R30.00	R43.00
		Op-en Afrit (S)	R5.50	R12.00	R15.00	R22.00
		Op-en Afrit (N)	R5.50	R12.00	R15.00	R22.00
	Mvoti	Hooflyn	R13.00	R36.00	R49.00	R73.00
	Mandini	Op-en Afrit	R7.00	R13.00	R16.00	R22.00
	Dokodweni	Op-en Afrit	R19.00	R37.00	R43.00	R59.00
	Mtunzini	Hooflyn	R44.50	R85.00	R101.00	R151.00
		Op-en Afrit (S)	R37.00	R69.00	R83.00	R120.00
	Op-en Afrit (N)	R8.00	R16.00	R19.00	R32.00	
N3 Mariannhill	Mariannhill	Hooflyn	R11.50	R21.00	R26.00	R40.00
N4 Magalies	Pelindaba	Hooflyn	R5.50	R11.00	R15.00	R19.00
	Quagga	Hooflyn	R4.50	R8.00	R11.00	R15.00
N17	Gosforth	Hooflyn	R12.00	R32.00	R35.00	R48.00
		Op-en Afrit (W)	R6.50	R13.00	R18.00	R23.00
		Op-en Afrit (O)	R5.50	R20.00	R22.00	R30.00
	Dalpark	Hooflyn	R11.00	R23.00	R30.00	R40.00
	Denne	Op-en Afrit	R9.50	R19.00	R24.00	R32.00
	Leandra	Hooflyn	R35.00	R88.00	R132.00	R176.00
		Op-en Afrit	R21.00	R53.00	R79.00	R106.00
	Trichardt	Hooflyn	R17.50	R44.00	R67.00	R88.00
	Ermelo	Hooflyn	R31.50	R79.00	R118.00	R157.00
R30/R730/R34	Brandfort	Hooflyn	R43.50	R87.00	R131.00	R184.00

4. PLAASLIKE GEBRUIKER TOLTARIEF

- 4.1 'n Plaaslike gebruiker toltarief, vir verskillende kategorieë van motorvoertuie, word toegestaan, onderhewig aan die terme en voorwaardes van die Suid-Afrikaanse Nasionale Padagentskap MSB Beperk (SANRAL) (beskikbaar by die Tolplazas), aan geregistreerde *bona fide* inwoners, werkgewers of werknemers geleë binne 'n goedgekeurde plaaslike gebruiker area, na suksesvolle aansoek by die toepaslike toloperateur.
- 4.2 Die plaaslike gebruiker toltariewe vir die plaaslike gebruiker areas, soos aangedui op die verskeie kaarte aangeheg by hierdie Kennisgewing en waarvan 'n afskrif by SANRAL verkry kan word, vir die verskillende kategorieë van motorvoertuie, betaalbaar by die Verkeerdevlei, Grasmere, Capricorn, Baobab, Tsitsikamma, Leandra, Trichardt, Ermelo en Brandfort Tolplazas, geleë op die Vaalrivier, Verre Noord, Tsitsikamma, N17 en R30/R730/R34 Tolpaaie, is uiteengesit in Tabel 2.

TABEL 2: PLAASLIKE GEBRUIKER TOLTARIEF – TIPE A

TOLPAD	PLAZA	PLAASLIKE GEBRUIKER AREA	KLAS 1	KLAS 2	KLAS 3	KLAS 4	
N1 Vaalrivier	Verkeerdevlei	Hooflyn	Verkeerdevlei	R16.50	R33.00	R50.00	R66.00
	Grasmere	Hooflyn	Evaton Sebokeng Vanderbijlpark	R3.00	-	-	-
		Op- en Afrit (S)	Ennerdale Lenasia South	R1.80	-	-	-
		Op- en Afrit (N)	Ennerdale Lenasia South	R1.80	-	-	-
N1 Verre Noord	Capricorn	Hooflyn	Capricorn	R12.50	R25.00	R32.00	R44.00
	Baobab	Hooflyn	Baobab	R14.50	R36.00	R50.00	R64.00
	Baobab	Hooflyn	Tshipise	R21.50	R54.00	R76.00	R97.00
N2 Tsitsikamma	Tsitsikamma	Hooflyn Op- en Afrit	Tsitsikamma	R15.00	-	-	-
		Hooflyn Op- en Afrit	Nature's Valley Coldstream	R7.50	-	-	-
N17	Leandra	Hooflyn	Leandra	R21.00	R53.00	R80.00	R106.00
		Op- en Afrit	Leandra	R12.50	R32.00	R48.00	R64.00
	Trichardt	Hooflyn	Trichardt	R9.00	R22.00	R34.00	R44.00
	Ermelo	Hooflyn	Ermelo	R15.50	R41.00	R59.00	R79.00
R30/R730/R34	Brandfort	Hooflyn	Area A	R4.40	R8.50	R14.00	R19.00
			Area B	R8.50	R17.00	R27.00	R37.00
			Area C	R17.50	R35.00	R53.00	R74.00

- 4.3 Die plaaslike gebruiker toltariewe vir die plaaslike gebruiker area, vir die verskillende kategorieë van motorvoertuie, betaalbaar by die Mvoti Tolplaza geleë op die Noordkus Tolpad, is uiteengesit in Tabel 3.

TABEL 3: PLAASLIKE GEBRUIKER TOLTARIEF – TIPE B

TOLPAD	PLAZA	PLAASLIKE GEBRUIKER AREA	KLAS 1	KLAS 2	KLAS 3	KLAS 4	
N2 Noordkus	Mvoti	Hooflyn	KwaDukuza	R3.80	R9.00	R14.00	R19.00
N2 Noordkus	Dokodweni	Ramp	Mandeni Local Municipality wards 1, 2, 3, 8 and 9	R2.80	R5.50	R7.00	R9.00

5. PLAASLIKE OPENBARE VERVOER OPERATEUR TOLTARIEF

- 5.1 'n Plaaslike openbare vervoer operateur toltarief, vir Klas 1 motorvoertuie alleen, word toegestaan, onderhewig aan die terme en voorwaardes van SANRAL (beskikbaar by die Tolplazas), aan geregistreerde *bona fide* plaaslike openbare vervoer operateurs wat binne 'n goedgekeurde plaaslike gebruiker area opereer, na suksesvolle aansoek by die toepaslike toloperateur.
- 5.2 Die plaaslike openbare vervoer operateur toltariewe vir die plaaslike gebruiker areas soos aangedui op die verskeie kaarte aangeheg by hierdie Kennisgewing en waarvan 'n afskrif by SANRAL verkry kan word, vir Klas 1 motorvoertuie alleen, betaalbaar by die Verkeerdevlei, Capricorn, Baobab en Brandfort Tolplazas geleë op die Vaalrivier, Verre Noord en R30/R730/R34 Tolpaaie, is uiteengesit in Tabel 4.

TOLPAD	PLAZA		PLAASLIKE GEBRUIKER AREA	KLAS 1
N1 Vaalrivier	Verkeerdevlei	Hooflyn	Verkeerdevlei	R16.50
N1 Verre Noord	Capricorn	Hooflyn	Capricorn	R12.50
	Baobab	Hooflyn	Baobab	R13.50
R30/R730/R34	Brandfort	Hooflyn	Areas A, B & C	R8.50

6. GEREELDE GEBRUIKER AFSLAG

- 6.1 By spesifieke tolplazas, word 'n gereelde gebruiker afslag op die tolbedrag, alleenlik vir Klas 1 motorvoertuie toegestaan, onderhewig aan die terme en voorwaardes van SANRAL (beskikbaar by die Tolplazas), aan geregistreerde gereelde gebruikers wat 'n voorgeskrewe aantal deurgange binne 'n bepaalde periode voltooi, na suksesvolle aansoek by die toepaslike toloperateur. By sommige van die spesifieke tolplazas, mag 'n geregistreerde *bona fide* plaaslike gebruiker en 'n geregistreerde *bona fide* plaaslike openbare vervoer operateur ook registreer as 'n gereelde gebruiker. Die gereelde gebruiker afslag word toegepas, na gelang van die aantal deurgange voltooi binne die bepaalde periode, of aan die waarde van die totale aantal deurgange, of aan die spesifieke reeks van deurgange.

'n Gereelde Gebruikerskaart moet aangebied word as betaling by 'n tolplaza – 'n Plaaslike Gebruikerskaart, Plaaslike Openbare Vervoer Operateurkaart, geldige Kredietkaart (bv. Visa- of Masterkaart), geldige Vlootbedryfskaart, mag geregistreer word as 'n Gereelde Gebruikerskaart.

- 6.2 Die gereelde gebruiker afslae vir die spesifieke tolplazas geleë op die Hugenote, Vaalrivier, Verre Noord, Suidkus, Noordkus, Mariannhill, Magalies, N17 en R30/R730/R34 Tolpaaie, vir Klas 1 motorvoertuie alleen, na gelang van die aantal deurgange voltooi binne die bepaalde periode, op die tolbedrae soos vermeld in die toepaslike tabelle, is uiteengesit in Tabelle 5.1 en 5.2.

TOLPAD	PLAZA	KALENDER MAAND	AFSLAG NA GELANG VAN AANTAL DEURGANGE		TOLTARIEF TABEL
			20%*	40%*	
N1 Hugenote	Hugenote Hooflyn	1	20 tot 39	40 en meer	1
N1 Vaalrivier	Verkeerdevlei Hooflyn	1	20 tot 39	40 en meer	1, 2 en 4
	Grasmere Hooflyn	1	20 tot 39	40 en meer	1

N1 Verre Noord	Capricorn	Hooflyn	1	20 tot 39	40 en meer	1, 2 en 4
	Baobab	Hooflyn	1	20 tot 39	40 en meer	1, 2 en 4
N2 Suidkus	Izotsha	Op- en Afrit	3	20 tot 39	40 en meer	1
	Oribi	Hooflyn	3	20 tot 39	40 en meer	1
		Op- en Afrit (S)	3	20 tot 39	40 en meer	1
		Op- en Afrit (N)	3	20 tot 39	40 en meer	1
	Umtentweni	Op- en Afrit	3	20 tot 39	40 en meer	1
N2 Noordkus	King Shaka Lughawe	Oprit	1	10 tot 19	20 en meer	1
	oThongathi	Hooflyn	1	20 tot 39	40 en meer	1
		Op- en Afrit (S)	1	20 tot 39	40 en meer	1
		Op- en Afrit (N)	1	20 tot 39	40 en meer	1
	Mvoti	Hooflyn	1	20 tot 39	40 en meer	1
	Mandini	Op- en Afrit	1	20 tot 39	40 en meer	1
	Dokodweni	Op- en Afrit	1	20 tot 39	40 en meer	1
	Mtunzini	Hooflyn	1	20 tot 39	40 en meer	1
		Op- en Afrit (S)	1	20 tot 39	40 en meer	1
		Op- en Afrit (N)	1	20 tot 39	40 en meer	1
N3 Mariannahill	Mariannahill	Hooflyn	1	20 tot 39	40 en meer	1
N4 Magalies	Pelindaba	Hooflyn	1	20 tot 39	40 en meer	1
	Quagga	Hooflyn	1	20 tot 39	40 en meer	1
N17	Gosforth	Hooflyn	1	35 tot 69	70 en meer	1
		Op- en Afrit (W)	1	35 tot 69	70 en meer	1
		Op- en Afrit (O)	1	35 tot 69	70 en meer	1
	Dalpark	Hooflyn	1	35 tot 69	70 en meer	1
R30/R730/R34	Brandfort	Hooflyn	1	20 tot 39	40 en meer	1, 2 en 4

*Die betrokke gereelde gebruiker afslag word toegepas aan die waarde van die totale deurgange voltooi binne die bepaalde period.

TABEL 5.2: GEREELDE GEBRUIKER AFSLAG – TIPE B

TOLPAD	PLAZA		KALENDER MAAND	AFSLAG NA GELANG VAN AANTAL DEURGANGE		TOLTARIEF TABEL
				Deurgange per maand	Afslag*	
N17	Leandra	Hooflyn	1	1 to 15	0%	1 en 2
		Op- en Afrit	1	16 to 20	40%	
	Trichardt	Hooflyn	1	21 to 30	55%	
	Ermelo	Hooflyn	1	31 en meer	70%	

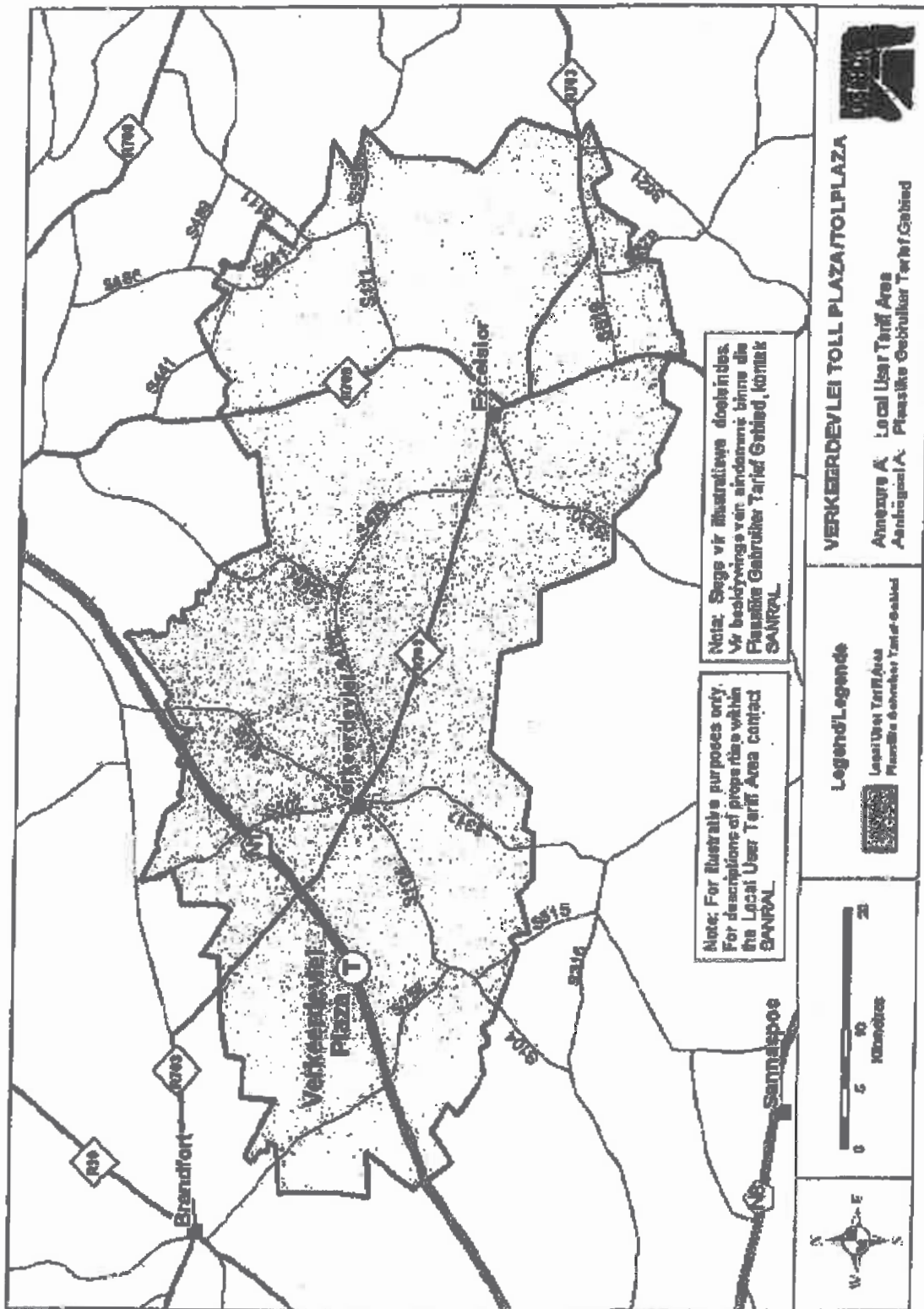
*Die gereelde gebruiker afslag soos aangedui is slegs van toepassing op die deurgange wat in die spesifieke "deurgange per maand" reeks by 'n spesifieke tolplaza onderneem.

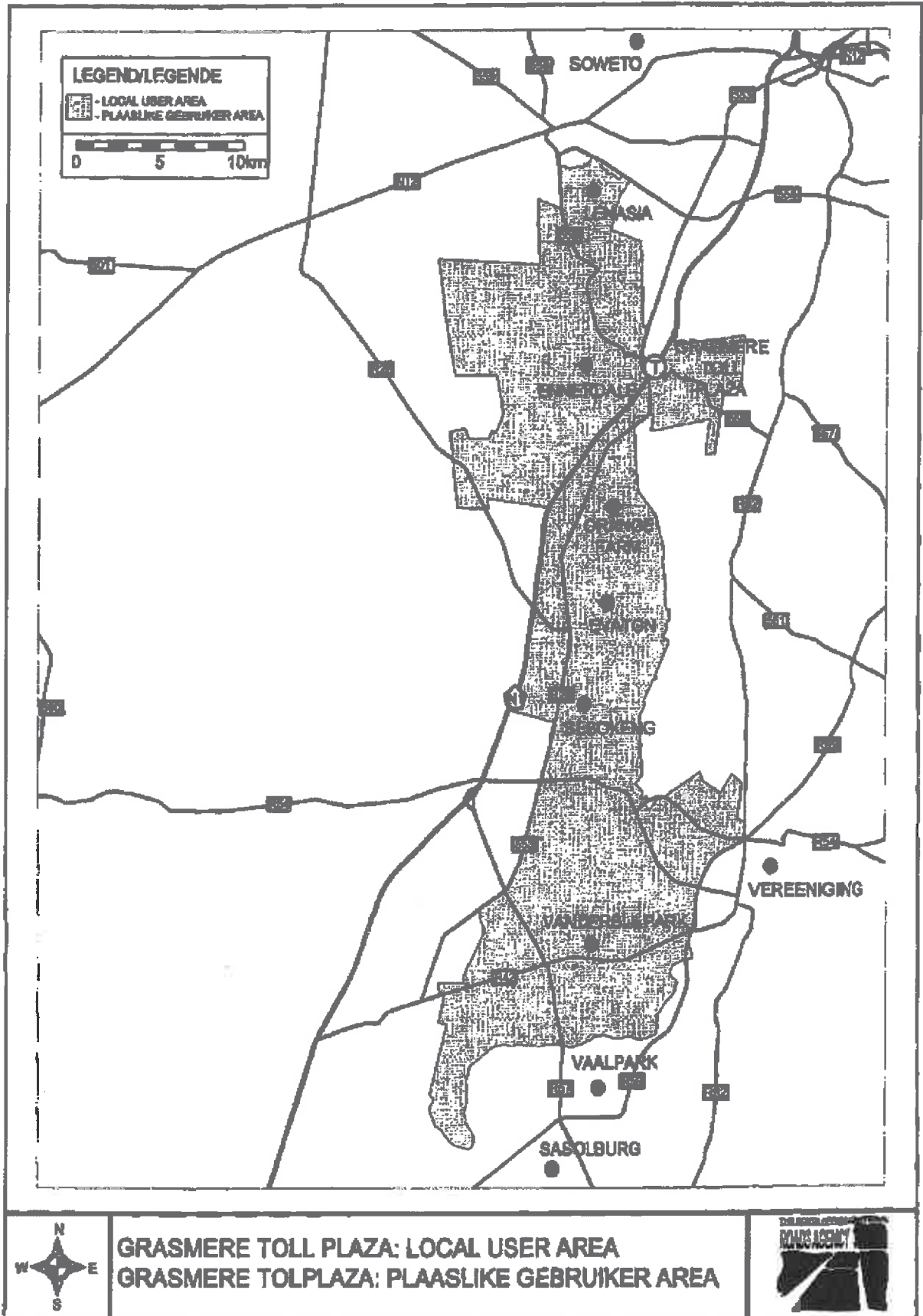
7. OPERASIONELE URE

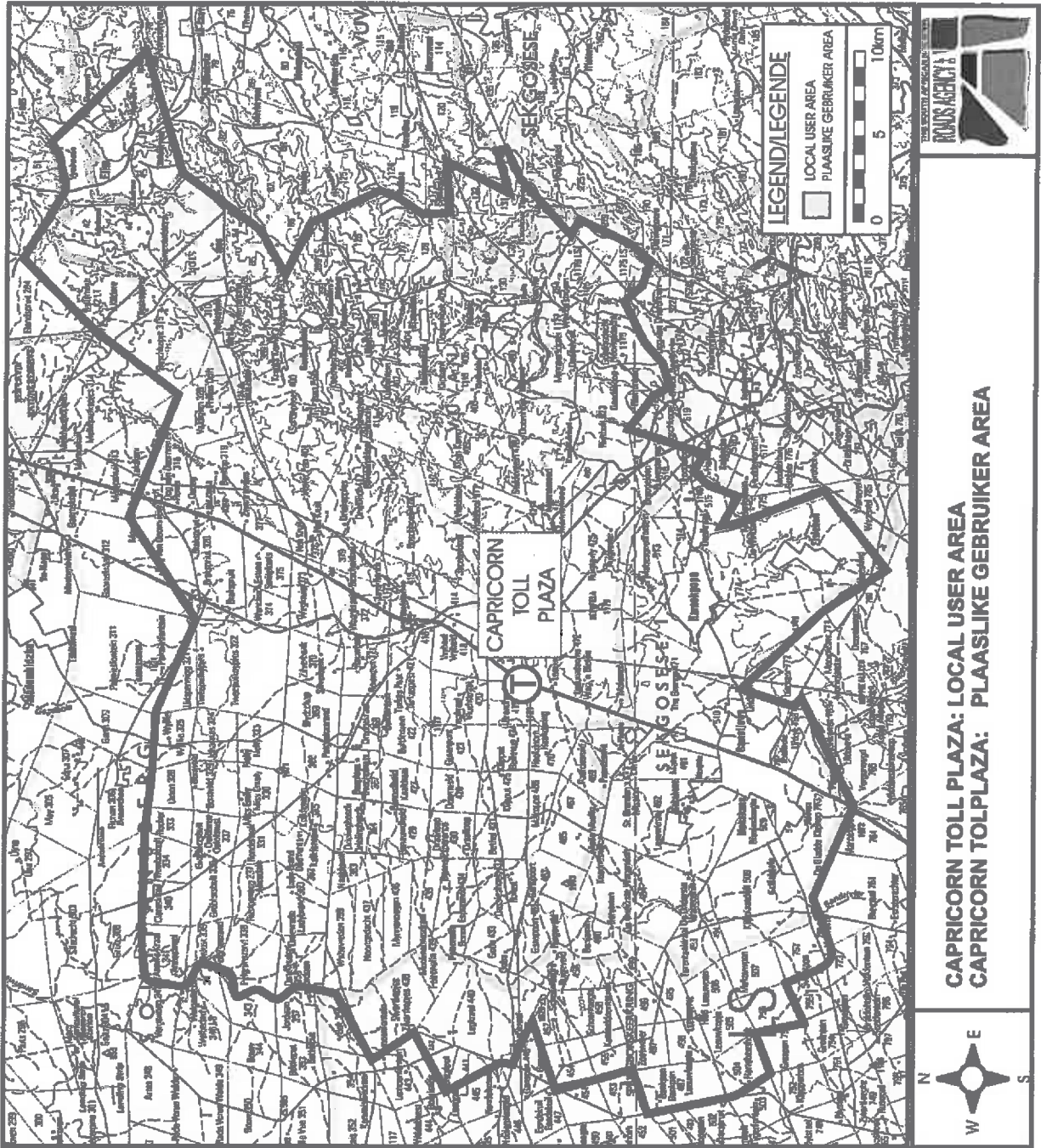
7.1 Die genoemde tolplaaie sal 24 uur per dag oop wees vir verkeer.

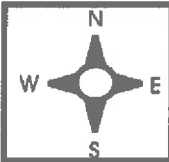
8. INWERKINGTREDINGSDATUM

8.1 Die datum en tyd wanner die genoemde tolbedrae betaalbaar word, is 12 April 2018 om 00:00.



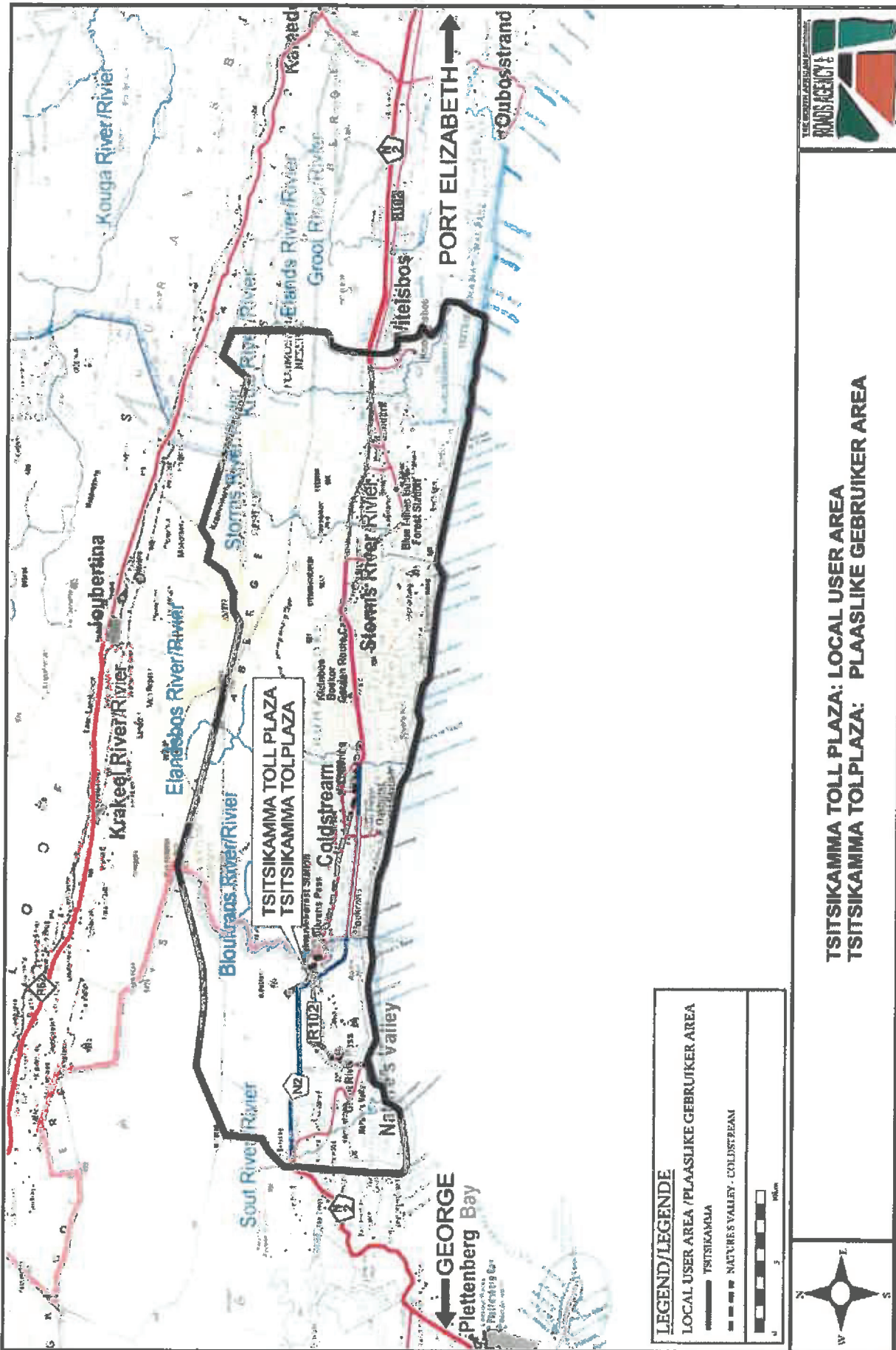


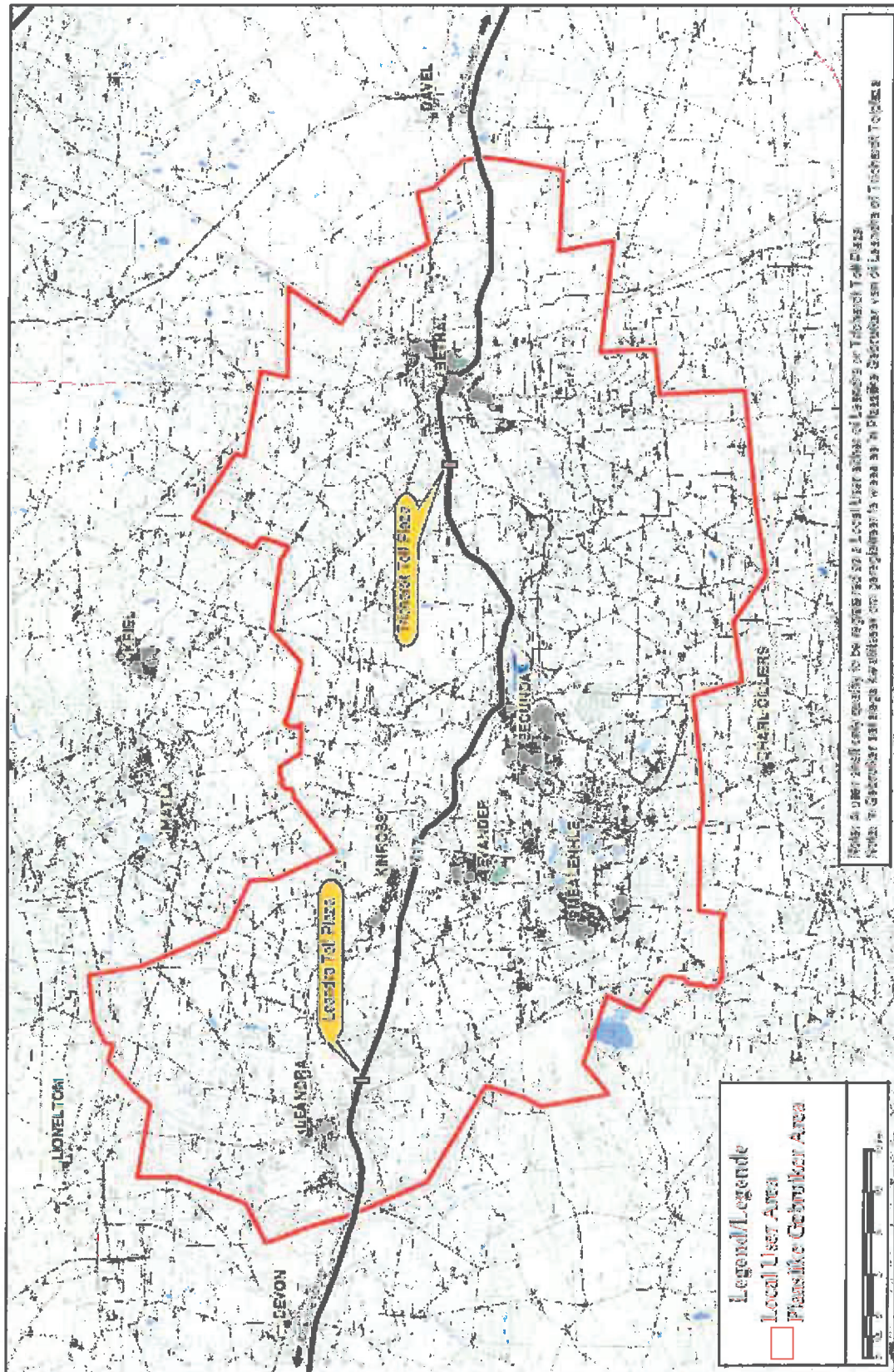




BAOBAB TOLL PLAZA: LOCAL USER AREA
BAOBAB TOLPLAZA: PLAASLIKE GEBRUIKER AREA



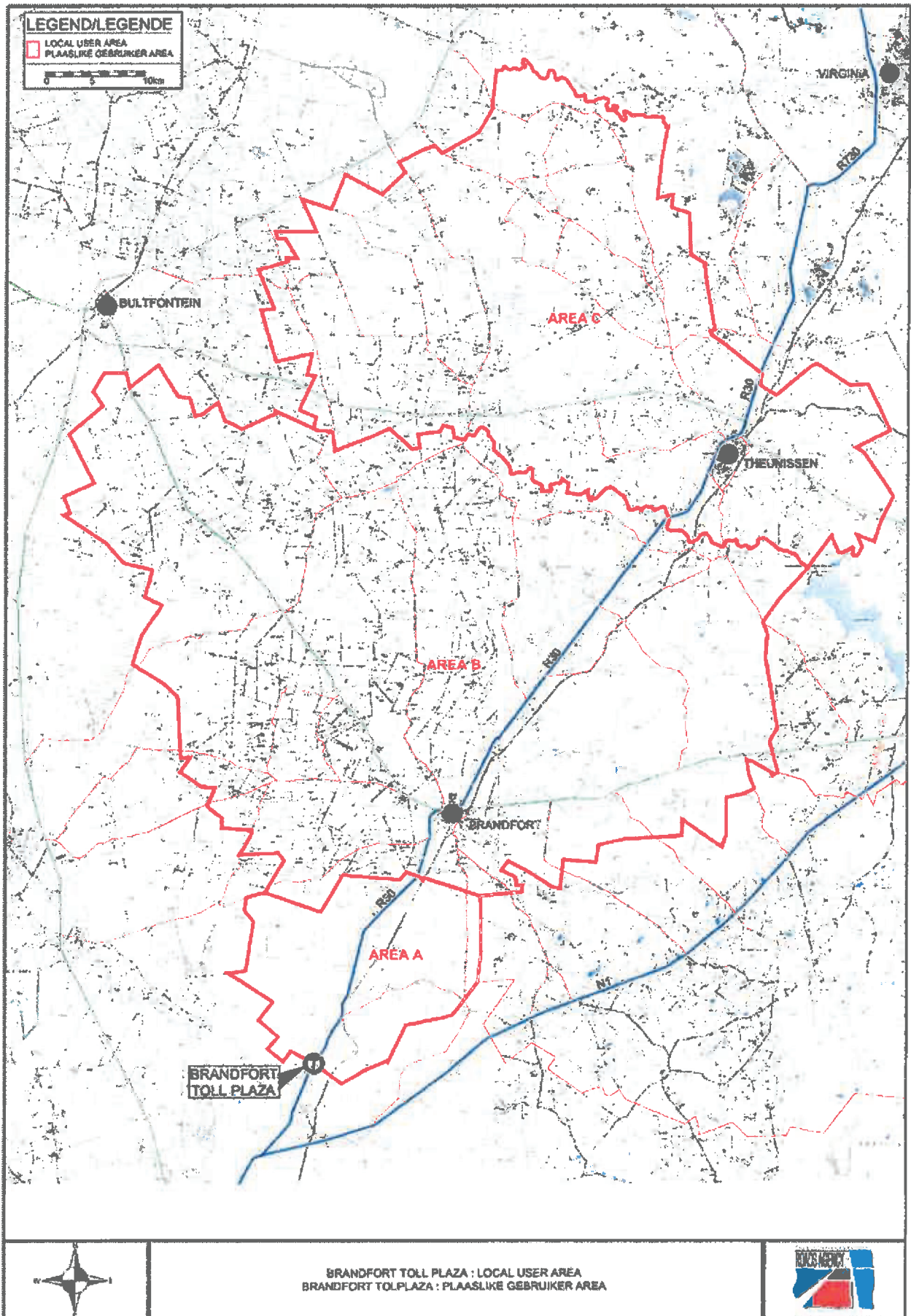




Notes: A user shall only qualify to be registered as a Local User of the Leandra or Trichardt Toll Plaza.
Notes: 'n Gebruiker kan slegs as Plaaslike Gebruiker registreer word as 'n Plaaslike Gebruiker van die Leandra of Trichardt Toll Plaza.



LEANDRA AND TRICHARDT TOLL PLAZAS : LOCAL USER AREA
LEANDRA EN TRICHARTD TOLPLAZAS: PLAASLIKE GEBRUIKER AREA



DEPARTMENT OF TRANSPORT

NO. 398

28 MARCH 2018

THE SOUTH AFRICAN NATIONAL ROADS AGENCY SOC LIMITED

NATIONAL ROUTE 4: HANS STRYDOM INTERCHANGE (PRETORIA) TO THE GAUTENG / MPUMALANGA BORDER AND MAPUTO DEVELOPMENT CORRIDOR TOLL ROADS: PUBLICATION OF THE AMOUNTS OF TOLL FOR THE DIFFERENT CATEGORIES OF MOTOR VEHICLES, AND THE DATE AND TIME FROM WHICH THE TOLL TARIFFS SHALL BECOME PAYABLE

The Head of the Department hereby, in terms of section 28(4) read with section 27(3) of The South African National Roads Agency Limited and National Roads Act, 1998 (Act No. 7 of 1998) [the Act], makes known that the amounts of toll to be levied in terms of section 28(2) of the Act at the toll plazas located on the Hans Strydom Interchange (Pretoria) to the Gauteng / Mpumalanga Border and Maputo Development Corridor Toll Roads, and the date and time from which the amounts of toll shall become payable, have been determined by the Minister of Transport in terms of section 27(3)(a) of the Act, and that the said amounts shall be levied in terms of section 28(4) read with section 27 of the Act, as set out in the Schedule.



Mr Mathabatha Mokonyama
ACTING DIRECTOR-GENERAL: TRANSPORT

SCHEDULE

1. DEFINITIONS

The following words and expressions shall have the meanings stated, unless the context otherwise indicates.

- 1.1 **“Abnormal vehicle”** means a motor vehicle exceeding the legal dimensions as described in the Road Traffic Act, 1996 (Act No. 93 of 1996), as amended, or in any other law.
- 1.2 **“Axle”** means a device or set of devices, whether continuous across the width of the vehicle or not, about which the wheels of the vehicle rotate and which is so placed that, when the vehicle is travelling straight ahead, the vertical centre-lines of such wheels are in one vertical plane at right angles to the longitudinal centre-line of such vehicle. Axle shall also include an axle that is lifted and of which the wheels are not in contact with the road surface.
- 1.3 **“Heavy axle”** means an axle the wheels of which are fitted with tyres of a size (bead seat diameter) greater than 406,4 millimetres (16 inches), or an axle with more than two (2) wheels irrespective of tyre size, but excluding any axle of a motorcycle, a motor tricycle or a motor car.
- 1.4 **“Heavy vehicle”** means a motor vehicle with at least one heavy axle and/or any vehicle which is principally designed or adapted for the conveyance of persons exceeding sixteen (16) in number.
- 1.5 **“Light delivery vehicle”** means a motor vehicle designed or adapted for the conveyance of persons and freight with no heavy axle as defined in paragraph 1.3 above.
- 1.6 **“Light vehicle”** means a motor vehicle, other than a heavy vehicle.
- 1.7 **“Motor car”** means a motor vehicle, other than a motorcycle or a motor tricycle, designed or adapted solely or principally for the conveyance of persons not exceeding sixteen (16) in number, but excluding any vehicle with an axle with more than two (2) wheels irrespective of tyre size.
- 1.8 **“Motorcycle”** means a motor vehicle that has two wheels and includes any such vehicle having a side-car attached thereto.
- 1.9 **“Motor tricycle”** means a motor vehicle, other than a motorcycle with a side-car, which has three wheels and which is designed to be driven by means of the type of controls usually fitted to a motorcycle.
- 1.10 **“Motor vehicle”** means an entity comprising of one or more mechanically/electrically powered units with or without any trailer(s) physically joined by means of tow bars, tow ropes or mechanical articulation, and includes, inter alia:
- (a) a motorcycle;
 - (b) a motor tricycle;
 - (c) a motor car;
 - (d) a vehicle which has pedals and a mechanically/electrically powered unit as an integral part thereof or attached thereto and which is designed or adapted to be propelled by means of either such pedals or such mechanical/electrical unit or both; and
 - (e) a light delivery vehicle (a bakkie).

- 1.11 **“Trailer”** means a vehicle which is not self-propelled and which is designed or adapted to be drawn by a motor vehicle but does not include a side-car attached to a motorcycle.

2. CATEGORIES OF MOTOR VEHICLES

Class 1: *Light vehicles:*

Light vehicles are motor vehicles, other than heavy vehicles as defined above, with or without a trailer, and include motorcycles, motor tricycles and motor cars.

Class 2: *Medium heavy vehicles:*

Medium heavy vehicles are heavy vehicles, as defined above, with two axles.

Class 3: *Large heavy vehicles:*

Large heavy vehicles are heavy vehicles, as defined above, with three or four axles.

Class 4: *Extra large heavy vehicles:*

Extra large heavy vehicles are heavy vehicles, as defined above, with five or more axles.

3. TOLL TARIFF

- 3.1 The amounts of toll for the different categories of motor vehicles payable at the toll plazas located on the Hans Strydom Interchange (Pretoria) to the Gauteng / Mpumalanga Border and Maputo Development Corridor Toll Roads, for the usage of a section of toll road (or any part thereof), are stated in Table 1.

ROUTE	PLAZA	CLASS 1	CLASS 2	CLASS 3	CLASS 4
N4	Donkerhoek Ramp	R12.00	R17.00	R24.00	R47.00
N4	Cullinan Ramp	R15.00	R24.00	R36.00	R60.00
N4	Diamond Hill Mainline	R36.00	R50.00	R93.00	R154.00
N4	Valtaki Ramp	R28.00	R39.00	R57.00	R128.00
N4	Ekandustria Ramp	R21.00	R32.00	R44.00	R88.00
N4	Middelburg Mainline	R59.00	R128.00	R194.00	R255.00
N4	Machado Mainline	R88.00	R245.00	R356.00	R509.00
N4	Nkomazi Mainline	R67.00	R135.00	R196.00	R283.00

4. OPERATIONAL HOURS

- 4.1 The said toll road shall be open to traffic for 24 hours a day.

5. EFFECTIVE DATE

- 5.1 The date and time from which the said amounts of toll shall become payable, shall be 12 April 2018 at 00:00.

DEPARTEMENT VAN VERVOER

NO. 398

28 MAART 2018

DIE SUID-AFRIKAANSE NASIONALE PADAGENTSKAP MSB BEPERK

NASIONALE ROETE 4: HANS STRYDOM WISSELAAR (PRETORIA) NA DIE GAUTENG / MPUMALANGA GRENS EN MAPUTO ONTWIKKELING KORRIDOR TOLPAAIE: PUBLISERING VAN DIE TOLBEDRAE VIR DIE VERSKILLENDE KATEGORIEë VAN MOTORVOERTUIE, EN DIE DATUM EN TYD VANAF DIE TOLBEDRAE BETAALBAAR WORD

Die Hoof van die Departement maak hierby, kragtens die bepalings van artikel 28(4) saamgelees met artikel 27(3) van Die Suid-Afrikaanse Nasionale Padagentskap Beperk en Nasionale Paaie Wet, 1998 (Wet Nr. 7 van 1998) [die Wet], bekend dat die tolbedrae wat kragtens artikel 28(2) van die Wet gehef sal word by die tolplazas geleë op die Hans Strydom Wisselaar (Pretoria) na die Gauteng / Mpumalanga Grens en Maputo Ontwikkeling Korridor Tolpaaie, en die datum en tyd vanaf die tolbedrae betaalbaar word, kragtens artikel 27(3)(a) van die Wet deur die Minister van Vervoer bepaal is, en dat genoemde bedrae kragtens artikel 28(4) saamgelees met artikel 27 van die Wet gehef sal word, soos in die Bylae uiteengesit.



Mnr Mathabatha Mokonyama
WAARNEMENDE DIREKTEUR-GENERAAL: VERVOER

BYLAE

1. WOORDOMSKRYWINGS

Die volgende woorde en uitdrukkings sal die betekenis hê soos uiteengesit, tensy dit uit die samehang anders blyk.

- 1.1 **“Abnormale voertuig”** beteken ‘n motorvoertuig wat die wettige afmetings, soos beskryf in die Padverkeerswet, 1996 (Wet Nr. 93 van 1996), soos gewysig, of in enige ander wet oorskry.
- 1.2 **“As”** beteken ‘n toestel of stel toestelle, hetsy onafgebroke oor die breedte van die voertuig of nie, waarom die wiele van die voertuig ronddraai en wat so geplaas is dat wanneer die voertuig reguit vorentoe ry, die vertikale hartlyne van sodanige wiele in een vertikale vlak reghoekig met die langshartlyn van sodanige voertuig is. As sal ook ‘n as insluit waarvan die wiele opgelig en nie in kontak met die padoppervlak is nie.
- 1.3 **“Swaar as”** beteken ‘n as waarvan die wiele toegerus is met bande met ‘n grootte (spanranddeursnee) groter as 406,4 millimeter (16 duim), of ‘n as met meer as twee (2) wiele, ongeag die bandgrootte, maar nie ‘n as van ‘n motorfiets, ‘n motordriewiel of ‘n motorkar nie.
- 1.4 **“Swaar voertuig”** beteken ‘n motorvoertuig met minstens een swaar as en/of ‘n motorvoertuig wat ontwerp of aangepas is uitsluitlik of hoofsaaklik vir die vervoer van meer as sestien (16) persone.
- 1.5 **“Ligte afleweringvoertuig”** beteken ‘n motorvoertuig wat ontwerp of aangepas is vir die vervoer van persone en vrag met geen swaar as soos omskryf in paragraaf 1.3 hierbo nie.
- 1.6 **“Ligte voertuig”** beteken ‘n motorvoertuig, uitgesonderd ‘n swaar voertuig.
- 1.7 **“Motorkar”** beteken ‘n motorvoertuig, uitgesonderd ‘n motorfiets of motordriewiel, wat ontwerp of aangepas is uitsluitlik of hoofsaaklik vir die vervoer van hoogstens sestien (16) persone, maar uitgesluit enige voertuig met meer as twee (2) wiele, ongeag die bandgrootte, op enige as.
- 1.8 **“Motorfiets”** beteken ‘n motorvoertuig met twee wiele en ook enige sodanige voertuig waaraan ‘n syspan geheg is.
- 1.9 **“Motordriewiel”** beteken ‘n motorvoertuig, uitgesonderd ‘n motorfiets met syspan, wat drie wiele het en ontwerp is om bestuur te word deur middel van die tipe kontroles waarmee ‘n motorfiets gewoonlik toegerus is.
- 1.10 **“Motorvoertuig”** beteken ‘n entiteit bestaande uit een of meer meganies/elektries aangedrewe eenhede met of sonder sleepwa of sleepwaens wat fisies aan mekaar gekoppel is deur middel van sleepstange, sleptoue of meganiese geleiding en sluit onder andere in:
 - (a) ‘n motorfiets;
 - (b) ‘n motordriewiel;
 - (c) ‘n motorkar;
 - (d) ‘n voertuig met pedale en met ‘n meganies/elektries aangedrewe eenheid as ‘n integrerende deel daarvan of daaraan vasgeheg en wat ontwerp of aangepas is om of deur middel van sodanige pedale of deur middel van die meganiese/elektriese eenheid of deur albei voortbeweeg te word; en
 - (e) ‘n ligte afleweringvoertuig (‘n bakkie).

- 1.11 “**Sleepwa**” beteken ‘n voertuig wat nie selfaangedrewe is nie en wat ontwerp of aangepas is om deur ‘n motorvoertuig getrek te word, maar sluit nie ‘n syspan wat aan ‘n motorfiets vasgeheg is in nie.

2. KATEGORIEë VAN MOTORVOERTUIE

Klas 1: Ligte voertuie:

Ligte voertuie is motorvoertuie, uitgesonderd swaar voertuie soos hierbo omskryf, met of sonder sleepwa, en sluit motorfietse, motordriewiele en motorkarre in.

Klas 2: Medium swaar voertuie:

Medium swaar voertuie, is swaar voertuie, soos hierbo omskryf, met twee asse.

Klas 3: Groot swaar voertuie:

Groot swaar voertuie, is swaar voertuie, soos hierbo omskryf, met drie of vier asse.

Klas 4: Ekstra groot swaar voertuie:

Ekstra groot swaar voertuie, is swaar voertuie, soos hierbo omskryf, met vyf of meer asse.

3. TOLTARIEF

- 3.1 Die tolbedrae vir die verskillende kategorieë voertuie betaalbaar by die tolplazas geleë op die Hans Strydom Wisselaar (Pretoria) na die Gauteng / Mpumalanga Grens en Maputo Ontwikkeling Korridor Tolpaaie, vir die gebruik van 'n gedeelte van 'n tolpad (of enige deel daarvan), is uiteengesit in Tabel 1.

TABEL 1: TOLTARIEF						
ROETE	PLAZA		KLAS 1	KLAS 2	KLAS 3	KLAS 4
N4	Donkerhoek	Op- en Afrit	R12.00	R17.00	R24.00	R47.00
N4	Cullinan	Op- en Afrit	R15.00	R24.00	R36.00	R60.00
N4	Diamond Hill	Hooflyn	R36.00	R50.00	R93.00	R154.00
N4	Valtaki	Op- en Afrit	R28.00	R39.00	R57.00	R128.00
N4	Ekandustria	Op- en Afrit	R21.00	R32.00	R44.00	R88.00
N4	Middelburg	Hooflyn	R59.00	R128.00	R194.00	R255.00
N4	Machado	Hooflyn	R88.00	R245.00	R356.00	R509.00
N4	Nkomazi	Hooflyn	R67.00	R135.00	R196.00	R283.00

4. OPERASIONELE URE

- 4.1 Die genoemde tolpad sal 24 uur per dag oop wees vir verkeer.

5. INWERKINGTREDINGSDATUM

- 5.1 Die datum en tyd vanaf die genoemde tolbedrae betaalbaar word, is 12 April 2018 om 00:00.

DEPARTMENT OF TRANSPORT

NO. 399

28 MARCH 2018

THE SOUTH AFRICAN NATIONAL ROADS AGENCY SOC LIMITED

NATIONAL ROUTES 1 AND 4: PLATINUM TOLL ROAD: PUBLICATION OF THE AMOUNTS OF TOLL FOR THE DIFFERENT CATEGORIES OF MOTOR VEHICLES, AND THE DATE AND TIME FROM WHICH THE TOLL TARIFFS SHALL BECOME PAYABLE

The Head of the Department hereby, in terms of section 28(4) read with section 27(3) of The South African National Roads Agency Limited and National Roads Act, 1998 (Act No. 7 of 1998) [the Act], makes known that the amounts of toll to be levied in terms of section 28(2) of the Act at the toll plazas located on the Platinum Toll Road, and the date and time from which the amounts of toll shall become payable, have been determined by the Minister of Transport in terms of section 27(3)(a) of the Act, and that the said amounts shall be levied in terms of section 28(4) read with section 27 of the Act, as set out in the Schedule.



Mr Mathabatha Mokonyama
ACTING DIRECTOR-GENERAL: TRANSPORT

SCHEDULE

1. DEFINITIONS

The following words and expressions shall have the meanings stated, unless the context otherwise indicates.

- 1.1 “**Abnormal vehicle**” means a motor vehicle exceeding the legal dimensions as described in the Road Traffic Act, 1996 (Act No. 93 of 1996), as amended, or in any other law.
- 1.2 “**Axle**” means a device or set of devices, whether continuous across the width of the vehicle or not, about which the wheels of the vehicle rotate and which is so placed that, when the vehicle is travelling straight ahead, the vertical centre-lines of such wheels are in one vertical plane at right angles to the longitudinal centre-line of such vehicle. Axle shall also include an axle that is lifted and of which the wheels are not in contact with the road surface.
- 1.3 “**Heavy axle**” means an axle the wheels of which are fitted with tyres of a size (bead seat diameter) greater than 406,4 millimetres (16 inches), or an axle with more than two (2) wheels irrespective of tyre size, but excluding any axle of a motorcycle, a motor tricycle or a motor car.
- 1.4 “**Heavy vehicle**” means a motor vehicle with at least one heavy axle and/or any vehicle which is principally designed or adapted for the conveyance of persons exceeding sixteen (16) in number.
- 1.5 “**Light delivery vehicle**” means a motor vehicle designed or adapted for the conveyance of persons and freight with no heavy axle as defined in paragraph 1.3 above.
- 1.6 “**Light vehicle**” means a motor vehicle, other than a heavy vehicle.
- 1.7 “**Motor car**” means a motor vehicle, other than a motorcycle or a motor tricycle, designed or adapted solely or principally for the conveyance of persons not exceeding sixteen (16) in number, but excluding any vehicle with an axle with more than two (2) wheels irrespective of tyre size.
- 1.8 “**Motorcycle**” means a motor vehicle that has two wheels and includes any such vehicle having a side-car attached thereto.
- 1.9 “**Motor tricycle**” means a motor vehicle, other than a motorcycle with a side-car, which has three wheels and which is designed to be driven by means of the type of controls usually fitted to a motorcycle.
- 1.10 “**Motor vehicle**” means an entity comprising of one or more mechanically/electrically powered units with or without any trailer(s) physically joined by means of tow bars, tow ropes or mechanical articulation, and includes, inter alia:
- (a) a motorcycle;
 - (b) a motor tricycle;
 - (c) a motor car;
 - (d) a vehicle which has pedals and a mechanically/electrically powered unit as an integral part thereof or attached thereto and which is designed or adapted to be propelled by means of either such pedals or such mechanical/electrical unit or both; and
 - (e) a light delivery vehicle (a bakkie).

- 1.11 **“Trailer”** means a vehicle which is not self-propelled and which is designed or adapted to be drawn by a motor vehicle but does not include a side-car attached to a motorcycle.

2. CATEGORIES OF MOTOR VEHICLES

Class 1: Light vehicles:

Light vehicles are motor vehicles, other than heavy vehicles as defined above, with or without a trailer, and include motorcycles, motor tricycles and motor cars.

Class 2: Medium heavy vehicles:

Medium heavy vehicles are heavy vehicles, as defined above, with two axles.

Class 3: Large heavy vehicles:

Large heavy vehicles are heavy vehicles, as defined above, with three or four axles.

Class 4: Extra large heavy vehicles:

Extra large heavy vehicles are heavy vehicles, as defined above, with five or more axles.

3. TOLL TARIFF

- 3.1 The amounts of toll for the different categories of motor vehicles payable at the toll plazas located on the Platinum Toll Road, for the usage of a section of toll road (or any part thereof), are stated in Table 1.

ROUTE	PLAZA		CLASS 1	CLASS 2	CLASS 3	CLASS 4
N1	Stormvoël	Ramp	R9.00	R22.00	R26.00	R31.00
N1	Zambesi	Ramp	R10.50	R26.00	R31.00	R37.00
N1	Pumulani	Mainline	R11.50	R29.00	R33.00	R40.00
N1	Wallmansthal	Ramp	R5.20	R13.00	R16.00	R18.50
N1	Murrayhill	Ramp	R10.50	R26.00	R32.00	R37.00
N1	Hammanskraal	Ramp	R24.50	R85.00	R92.00	R106.00
N1	Carousel	Mainline	R53.00	R142.00	R157.00	R182.00
N1	Maubane	Ramp	R23.00	R62.00	R68.00	R79.00
N4	Kroondal	Ramp	R14.00	R34.00	R38.00	R45.00
N4	Marikana	Mainline	R21.00	R51.00	R57.00	R68.00
N4	Buffelspoort	Ramp	R14.00	R34.00	R38.00	R45.00
N4	Brits	Mainline	R14.00	R49.00	R54.00	R64.00
N4	K99	Ramp	R14.00	R35.00	R41.00	R49.00
N4	Doornpoort	Mainline	R14.00	R35.00	R41.00	R49.00

4. OPERATIONAL HOURS

- 4.1 The said toll road shall be open to traffic for 24 hours a day.

5. EFFECTIVE DATE

- 5.1 The date and time from which the said amounts of toll shall become payable, shall be 12 April 2018 at 00:00.

DEPARTEMENT VAN VERVOER

NO. 399

28 MAART 2018

DIE SUID-AFRIKAANSE NASIONALE PADAGENTSKAP MSB BEPERK

NASIONALE ROETES 1 EN 4: PLATINUM TOLPAD: PUBLISERING VAN DIE TOLBEDRAE VIR DIE VERSKILLENDE KATEGORIEë VAN MOTORVOERTUIE, EN DIE DATUM EN TYD VANAF DIE TOLBEDRAE BETAALBAAR WORD

Die Hoof van die Departement maak hierby, kragtens die bepalings van artikel 28(4) saamgelees met artikel 27(3) van Die Suid-Afrikaanse Nasionale Padagentskap Beperk en Nasionale Paaie Wet, 1998 (Wet Nr. 7 van 1998) [die Wet], bekend dat die tolbedrae wat kragtens artikel 28(2) van die Wet gehef sal word by die tolplazas geleë op die Platinum Tolpad, en die datum en tyd vanaf die tolbedrae betaalbaar word, kragtens artikel 27(3)(a) van die Wet deur die Minister van Vervoer bepaal is, en dat genoemde bedrae kragtens artikel 28(4) saamgelees met artikel 27 van die Wet gehef sal word, soos in die Bylae uiteengesit.



Mnr Mathabatha Mokonyama
WAARNEMENDE DIREKTEUR-GENERAAL: VERVOER

BYLAE

1. WOORDOMSKRYWINGS

Die volgende woorde en uitdrukkings sal die betekenisse hê soos uiteengesit, tensy dit uit die samehang anders blyk.

- 1.1 **“Abnormale voertuig”** beteken ‘n motorvoertuig wat die wettige afmetings, soos beskryf in die Padverkeerswet, 1996 (Wet Nr. 93 van 1996), soos gewysig, of in enige ander wet oorskry.
- 1.2 **“As”** beteken ‘n toestel of stel toestelle, hetsy onafgebroke oor die breedte van die voertuig of nie, waarom die wiele van die voertuig ronddraai en wat so geplaas is dat wanneer die voertuig reguit vorentoe ry, die vertikale hartlyne van sodanige wiele in een vertikale vlak reghoekig met die langshartlyn van sodanige voertuig is. As sal ook ‘n as insluit waarvan die wiele opgelig en nie in kontak met die padoppervlak is nie.
- 1.3 **“Swaar as”** beteken ‘n as waarvan die wiele toegerus is met bande met ‘n grootte (spanranddeursnee) groter as 406,4 millimeter (16 duim), of ‘n as met meer as twee (2) wiele, ongeag die bandgrootte, maar nie ‘n as van ‘n motorfiets, ‘n motordriewiel of ‘n motorkar nie.
- 1.4 **“Swaar voertuig”** beteken ‘n motorvoertuig met minstens een swaar as en/of ‘n motorvoertuig wat ontwerp of aangepas is uitsluitlik of hoofsaaklik vir die vervoer van meer as sestien (16) persone.
- 1.5 **“Ligte afleweringvoertuig”** beteken ‘n motorvoertuig wat ontwerp of aangepas is vir die vervoer van persone en vrag met geen swaar as soos omskryf in paragraaf 1.3 hierbo nie.
- 1.6 **“Ligte voertuig”** beteken ‘n motorvoertuig, uitgesonderd ‘n swaar voertuig.
- 1.7 **“Motorkar”** beteken ‘n motorvoertuig, uitgesonderd ‘n motorfiets of motordriewiel, wat ontwerp of aangepas is uitsluitlik of hoofsaaklik vir die vervoer van hoogstens sestien (16) persone, maar uitgesluit enige voertuig met meer as twee (2) wiele, ongeag die bandgrootte, op enige as.
- 1.8 **“Motorfiets”** beteken ‘n motorvoertuig met twee wiele en ook enige sodanige voertuig waaraan ‘n syspan geheg is.
- 1.9 **“Motordriewiel”** beteken ‘n motorvoertuig, uitgesonderd ‘n motorfiets met syspan, wat drie wiele het en ontwerp is om bestuur te word deur middel van die tipe kontroles waarmee ‘n motorfiets gewoonlik toegerus is.
- 1.10 **“Motorvoertuig”** beteken ‘n entiteit bestaande uit een of meer meganies/elektries aangedrewe eenhede met of sonder sleepwa of sleepwaens wat fisies aan mekaar gekoppel is deur middel van sleepstange, sleeptoue of meganiese geleiding en sluit onder andere in:
- (a) ‘n motorfiets;
 - (b) ‘n motordriewiel;
 - (c) ‘n motorkar;
 - (d) ‘n voertuig met pedale en met ‘n meganies/elektries aangedrewe eenheid as ‘n integrerende deel daarvan of daaraan vasgeheg en wat ontwerp of aangepas is om of deur middel van sodanige pedale of deur middel van die meganiese/elektriese eenheid of deur albei voortbeweeg te word; en
 - (e) ‘n ligte afleweringvoertuig (‘n bakkie).

- 1.11 “**Sleepwa**” beteken ‘n voertuig wat nie selfaangedrewe is nie en wat ontwerp of aangepas is om deur ‘n motorvoertuig getrek te word, maar sluit nie ‘n syspan wat aan ‘n motorfiets vasgeheg is in nie.

2. KATEGORIEë VAN MOTORVOERTUIE

Klas 1: Ligte voertuie:

Ligte voertuie is motorvoertuie, uitgesonderd swaar voertuie soos hierbo omskryf, met of sonder sleepwa, en sluit motorfietse, motordriewiele en motorkarre in.

Klas 2: Medium swaar voertuie:

Medium swaar voertuie, is swaar voertuie, soos hierbo omskryf, met twee asse.

Klas 3: Groot swaar voertuie:

Groot swaar voertuie, is swaar voertuie, soos hierbo omskryf, met drie of vier asse.

Klas 4: Ekstra groot swaar voertuie:

Ekstra groot swaar voertuie, is swaar voertuie, soos hierbo omskryf, met vyf of meer asse.

3. TOLTARIEF

- 3.1 Die tolbedrae vir die verskillende kategorieë voertuie betaalbaar by die tolplazas geleë op die Platinum TolPad, vir die gebruik van 'n gedeelte van 'n tolpad (of enige deel daarvan), is uiteengesit in Tabel 1.

TABEL 1: TOL TARIEF						
ROETE	PLAZA		KLAS 1	KLAS 2	KLAS 3	KLAS 4
N1	Stormvoël	Op- en Afrit	R9.00	R22.00	R26.00	R31.00
N1	Zambesi	Op- en Afrit	R10.50	R26.00	R31.00	R37.00
N1	Pumulani	Hooflyn	R11.50	R29.00	R33.00	R40.00
N1	Wallmansthal	Op- en Afrit	R5.20	R13.00	R16.00	R18.50
N1	Murrayhill	Op- en Afrit	R10.50	R26.00	R32.00	R37.00
N1	Hammanskraal	Op- en Afrit	R24.50	R85.00	R92.00	R106.00
N1	Carousel	Hooflyn	R53.00	R142.00	R157.00	R182.00
N1	Maubane	Op- en Afrit	R23.00	R62.00	R68.00	R79.00
N4	Kroondal	Op- en Afrit	R14.00	R34.00	R38.00	R45.00
N4	Marikana	Hooflyn	R21.00	R51.00	R57.00	R68.00
N4	Buffelspoort	Op- en Afrit	R14.00	R34.00	R38.00	R45.00
N4	Brits	Hooflyn	R14.00	R49.00	R54.00	R64.00
N4	K99	Op- en Afrit	R14.00	R35.00	R41.00	R49.00
N4	Doornpoort	Hooflyn	R14.00	R35.00	R41.00	R49.00

4. OPERASIONELE URE

- 4.1 Die genoemde tolpad sal 24 uur per dag oop wees vir verkeer.

5. INWERKINGTREDINGSDATUM

- 5.1 Die datum en tyd vanaf die genoemde tolbedrae betaalbaar word, is 12 April 2018 om 00:00.

DEPARTMENT OF TRANSPORT

NO. 400

28 MARCH 2018

THE SOUTH AFRICAN NATIONAL ROADS AGENCY SOC LIMITED

**NATIONAL ROUTE 3: CEDARA TO HEIDELBERG GAUTENG TOLL ROAD:
PUBLICATION OF THE AMOUNTS OF TOLL FOR THE DIFFERENT CATEGORIES OF
MOTOR VEHICLES, AND THE DATE AND TIME FROM WHICH THE TOLL TARIFFS
SHALL BECOME PAYABLE**

The Head of the Department hereby, in terms of section 28(4) read with section 27(3) of The South African National Roads Agency Limited and National Roads Act, 1998 (Act No. 7 of 1998) [the Act], makes known that the amounts of toll to be levied in terms of section 28(2) of the Act at the toll plazas located on the Cedara to Heidelberg Gauteng Toll Road, and the date and time from which the amounts of toll shall become payable, have been determined by the Minister of Transport in terms of section 27(3)(a) of the Act, and that the said amounts shall be levied in terms of section 28(4) read with section 27 of the Act, as set out in the Schedule.



Mr Mathabatha Mokonyama
ACTING DIRECTOR-GENERAL: TRANSPORT

SCHEDULE

1. DEFINITIONS

The following words and expressions shall have the meanings stated, unless the context otherwise indicates.

- 1.1 “**Abnormal vehicle**” means a motor vehicle exceeding the legal dimensions as described in the Road Traffic Act, 1996 (Act No. 93 of 1996), as amended, or in any other law.
- 1.2 “**Axle**” means a device or set of devices, whether continuous across the width of the vehicle or not, about which the wheels of the vehicle rotate and which is so placed that, when the vehicle is travelling straight ahead, the vertical centre-lines of such wheels are in one vertical plane at right angles to the longitudinal centre-line of such vehicle. Axle shall also include an axle that is lifted and of which the wheels are not in contact with the road surface.
- 1.3 “**Heavy axle**” means an axle the wheels of which are fitted with tyres of a size (bead seat diameter) greater than 406,4 millimetres (16 inches), or an axle with more than two (2) wheels irrespective of tyre size, but excluding any axle of a motorcycle, a motor tricycle or a motor car.
- 1.4 “**Heavy vehicle**” means a motor vehicle with at least one heavy axle and/or any vehicle which is principally designed or adapted for the conveyance of persons exceeding sixteen (16) in number.
- 1.5 “**Light delivery vehicle**” means a motor vehicle designed or adapted for the conveyance of persons and freight with no heavy axle as defined in paragraph 1.3 above.
- 1.6 “**Light vehicle**” means a motor vehicle, other than a heavy vehicle.
- 1.7 “**Motor car**” means a motor vehicle, other than a motorcycle or a motor tricycle, designed or adapted solely or principally for the conveyance of persons not exceeding sixteen (16) in number, but excluding any vehicle with an axle with more than two (2) wheels irrespective of tyre size.
- 1.8 “**Motorcycle**” means a motor vehicle that has two wheels and includes any such vehicle having a side-car attached thereto.
- 1.9 “**Motor tricycle**” means a motor vehicle, other than a motorcycle with a side-car, which has three wheels and which is designed to be driven by means of the type of controls usually fitted to a motorcycle.
- 1.10 “**Motor vehicle**” means an entity comprising of one or more mechanically/electrically powered units with or without any trailer(s) physically joined by means of tow bars, tow ropes or mechanical articulation, and includes, inter alia:
- (a) a motorcycle;
 - (b) a motor tricycle;
 - (c) a motor car;
 - (d) a vehicle which has pedals and a mechanically/electrically powered unit as an integral part thereof or attached thereto and which is designed or adapted to be propelled by means of either such pedals or such mechanical/electrical unit or both; and
 - (e) a light delivery vehicle (a bakkie).

- 1.11 **“Trailer”** means a vehicle which is not self-propelled and which is designed or adapted to be drawn by a motor vehicle but does not include a side-car attached to a motorcycle.

2. CATEGORIES OF MOTOR VEHICLES

Class 1: *Light vehicles:*

Light vehicles are motor vehicles, other than heavy vehicles as defined above, with or without a trailer, and include motorcycles, motor tricycles and motor cars.

Class 2: *Medium heavy vehicles:*

Medium heavy vehicles are heavy vehicles, as defined above, with two axles.

Class 3: *Large heavy vehicles:*

Large heavy vehicles are heavy vehicles, as defined above, with three or four axles.

Class 4: *Extra large heavy vehicles:*

Extra large heavy vehicles are heavy vehicles, as defined above, with five or more axles.

3. TOLL TARIFF

- 3.1 The amounts of toll for the different categories of motor vehicles payable at the toll plazas located on the Cedara to Heidelberg Gauteng Toll Road, for the usage of a section of toll road (or any part thereof), are stated in Table 1.

ROUTE	PLAZA		CLASS 1	CLASS 2	CLASS 3	CLASS 4
N3	Mooi	Mainline	R49.00	R119.00	R167.00	R226.00
N3		Ramp (S)	R34.00	R83.00	R117.00	R158.00
N3		Ramp (N)	R15.00	R36.00	R50.00	R68.00
N3	Treverton	Ramp	R15.00	R36.00	R50.00	R68.00
N3	Bergville	Ramp	R21.00	R24.00	R45.00	R70.00
N3	Tugela	Mainline	R70.00	R115.00	R181.00	R251.00
N3	Tugela East	Ramp	R43.00	R71.00	R106.00	R147.00
N3	Wilge	Mainline	R65.00	R112.00	R150.00	R212.00
N3	De Hoek	Mainline	R47.00	R73.00	R111.00	R160.00

4. OPERATIONAL HOURS

- 4.1 The said toll road shall be open to traffic for 24 hours a day.

5. EFFECTIVE DATE

- 5.1 The date and time from which the said amounts of toll shall become payable, shall be 12 April 2018 at 00:00.

DEPARTEMENT VAN VERVOER

NO. 400

28 MAART 2018

DIE SUID-AFRIKAANSE NASIONALE PADAGENTSKAP MSB BEPERK

**NASIONALE ROETE 3: CEDARA TOT HEIDELBERG GAUTENG TOLPAD:
PUBLISERING VAN DIE TOLBEDRAE VIR DIE VERSKILLENDE KATEGORIEë VAN
MOTORVOERTUIE, EN DIE DATUM EN TYD VANAF DIE TOLBEDRAE BETAALBAAR
WORD**

Die Hoof van die Departement maak hierby, kragtens die bepalings van artikel 28(4) saamgelees met artikel 27(3) van Die Suid-Afrikaanse Nasionale Padagentskap Beperk en Nasionale Paaie Wet, 1998 (Wet Nr. 7 van 1998) [die Wet], bekend dat die tolbedrae wat kragtens artikel 28(2) van die Wet gehef sal word by die tolplazas geleë op die Cedara tot Heidelberg Gauteng Tolpad, en die datum en tyd vanaf die tolbedrae betaalbaar word, kragtens artikel 27(3)(a) van die Wet deur die Minister van Vervoer bepaal is, en dat genoemde bedrae kragtens artikel 28(4) saamgelees met artikel 27 van die Wet gehef sal word, soos in die Bylae uiteengesit.



Mnr Mathabatha Mokonyama
WAARNEMENDE DIREKTEUR-GENERAAL: VERVOER

BYLAE**1. WOORDOMSKRYWINGS**

Die volgende woorde en uitdrukkings sal die betekenisse hê soos uiteengesit, tensy dit uit die samehang anders blyk.

- 1.1 **“Abnormale voertuig”** beteken ‘n motorvoertuig wat die wettige afmetings, soos beskryf in die Padverkeerswet, 1996 (Wet Nr. 93 van 1996), soos gewysig, of in enige ander wet oorskry.
- 1.2 **“As”** beteken ‘n toestel of stel toestelle, hetsy onafgebroke oor die breedte van die voertuig of nie, waarom die wiele van die voertuig ronddraai en wat so geplaas is dat wanneer die voertuig reguit vorentoe ry, die vertikale hartlyne van sodanige wiele in een vertikale vlak reghoekig met die langshartlyn van sodanige voertuig is. As sal ook ‘n as insluit waarvan die wiele opgelig en nie in kontak met die padoppervlak is nie.
- 1.3 **“Swaar as”** beteken ‘n as waarvan die wiele toegerus is met bande met ‘n grootte (spanranddeursnee) groter as 406,4 millimeter (16 duim), of ‘n as met meer as twee (2) wiele, ongeag die bandgrootte, maar nie ‘n as van ‘n motorfiets, ‘n motordriewiel of ‘n motorkar nie.
- 1.4 **“Swaar voertuig”** beteken ‘n motorvoertuig met minstens een swaar as en/of ‘n motorvoertuig wat ontwerp of aangepas is uitsluitlik of hoofsaaklik vir die vervoer van meer as sestien (16) persone.
- 1.5 **“Ligte afleweringvoertuig”** beteken ‘n motorvoertuig wat ontwerp of aangepas is vir die vervoer van persone en vrag met geen swaar as soos omskryf in paragraaf 1.3 hierbo nie.
- 1.6 **“Ligte voertuig”** beteken ‘n motorvoertuig, uitgesonderd ‘n swaar voertuig.
- 1.7 **“Motorkar”** beteken ‘n motorvoertuig, uitgesonderd ‘n motorfiets of motordriewiel, wat ontwerp of aangepas is uitsluitlik of hoofsaaklik vir die vervoer van hoogstens sestien (16) persone, maar uitgesluit enige voertuig met meer as twee (2) wiele, ongeag die bandgrootte, op enige as.
- 1.8 **“Motorfiets”** beteken ‘n motorvoertuig met twee wiele en ook enige sodanige voertuig waaraan ‘n syspan geheg is.
- 1.9 **“Motordriewiel”** beteken ‘n motorvoertuig, uitgesonderd ‘n motorfiets met syspan, wat drie wiele het en ontwerp is om bestuur te word deur middel van die tipe kontroles waarmee ‘n motorfiets gewoonlik toegerus is.
- 1.10 **“Motorvoertuig”** beteken ‘n entiteit bestaande uit een of meer meganies/elektries aangedrewe eenhede met of sonder sleepwa of sleepwaens wat fisies aan mekaar gekoppel is deur middel van sleepstange, sleeptoue of meganiese geleiding en sluit onder andere in:
- (a) ‘n motorfiets;
 - (b) ‘n motordriewiel;
 - (c) ‘n motorkar;
 - (d) ‘n voertuig met pedale en met ‘n meganies/elektries aangedrewe eenheid as ‘n integreerende deel daarvan of daaraan vasgeheg en wat ontwerp of aangepas is om of deur middel van sodanige pedale of deur middel van die meganiese/elektriese eenheid of deur albei voortbeweeg te word; en
 - (e) ‘n ligte afleweringvoertuig (‘n bakkie).

- 1.11 **“Sleepwa”** beteken ‘n voertuig wat nie selfaangedrewe is nie en wat ontwerp of aangepas is om deur ‘n motorvoertuig getrek te word, maar sluit nie ‘n syspan wat aan ‘n motorfiets vasgeheg is in nie.

2. KATEGORIEë VAN MOTORVOERTUIE

Klas 1: Ligte voertuie:

Ligte voertuie is motorvoertuie, uitgesonderd swaar voertuie soos hierbo omskryf, met of sonder sleepwa, en sluit motorfietse, motordriewiele en motorkarre in.

Klas 2: Medium swaar voertuie:

Medium swaar voertuie, is swaar voertuie, soos hierbo omskryf, met twee asse.

Klas 3: Groot swaar voertuie:

Groot swaar voertuie, is swaar voertuie, soos hierbo omskryf, met drie of vier asse.

Klas 4: Ekstra groot swaar voertuie:

Ekstra groot swaar voertuie, is swaar voertuie, soos hierbo omskryf, met vyf of meer asse.

3. TOLTARIEF

- 3.1 Die tolbedrae vir die verskillende kategorieë voertuie betaalbaar by die tolplazas geleë op die Cedara tot Heidelberg Gauteng Tolpad, vir die gebruik van 'n gedeelte van 'n tolpad (of enige deel daarvan), is uiteengesit in Tabel 1.

TABEL 1: TOLTARIEF						
ROETE	PLAZA		KLAS 1	KLAS 2	KLAS 3	KLAS 4
N3	Mooi	Hooflyn	R49.00	R119.00	R167.00	R226.00
N3		Op- en Afrit (S)	R34.00	R83.00	R117.00	R158.00
N3		Op- en Afrit (N)	R15.00	R36.00	R50.00	R68.00
N3	Treverton	Op-en Afrit	R15.00	R36.00	R50.00	R68.00
N3	Bergville	Op- en Afrit	R21.00	R24.00	R45.00	R70.00
N3	Tugela	Hooflyn	R70.00	R115.00	R181.00	R251.00
N3	Tugela Oos	Op-en Afrit	R43.00	R71.00	R106.00	R147.00
N3	Wilge	Hooflyn	R65.00	R112.00	R150.00	R212.00
N3	De Hoek	Hooflyn	R47.00	R73.00	R111.00	R160.00

4. OPERASIONELE URE

- 4.1 Die genoemde tolpad sal 24 uur per dag oop wees vir verkeer.

5. INWERKINGTREDINGSDATUM

- 5.1 Die datum en tyd vanaf die genoemde tolbedrae betaalbaar word, is 12 April 2018 om 00:00.

DEPARTMENT OF TRANSPORT

NO. 401

28 MARCH 2018

**THE SOUTH AFRICAN NATIONAL ROADS AGENCY LIMITED AND NATIONAL ROADS ACT, 1998
(ACT No. 7 OF 1998)**

GAUTENG FREEWAY IMPROVEMENT PROJECT, TOLL ROADS: PUBLICATION OF TOLLS

The Head of the Department of Transport hereby makes known, in terms of section 27(3)(c) of the South African National Roads Agency Limited and National Roads Act, 1998 (Act No. 7 of 1998), that the Minister of Transport has, in terms of section 27(3)(a) of the Act and on the recommendation of the South African National Roads Agency SOC Ltd, determined the tolls to be levied, and the rebates thereon and any increases and reductions thereof in the Schedule hereto, on the following roads:

As declared by Government Notice No. 349 to 354 in Government Gazette No. 30912 of 28 March 2008

- N1 sections 20 and 21
- N3 section 12
- N4 section 1
- N12 sections 18 and 19

As declared by Government Notice No. R.800 in Government Gazette No. 31273 of 28 July 2008

- R21 sections 1 and 2

The Minister of Transport has also determined, on the recommendation of the South African National Roads Agency SOC Ltd and in terms of section 27(3)(d) of the Act, that the tolls that may be levied in terms of this Notice, will be payable from 12 April 2018 ("Effective Date");

This notice, from the Effective Date, repeals and replaces all previous Toll Tariff Notices in respect of the aforementioned toll roads.



.....
Mr. M Mokonyama
ACTING DIRECTOR-GENERAL: TRANSPORT

SCHEDULE

THE SOUTH AFRICAN NATIONAL ROADS AGENCY LIMITED AND NATIONAL ROADS ACT, 1998 (ACT NO. 7 OF 1998)

GAUTENG FREEWAY IMPROVEMENT PROJECT, TOLL ROADS: PUBLICATION OF THE TOLLS FOR THE DIFFERENT CATEGORIES OF ROAD USERS AND CLASSES OF MOTOR VEHICLES AND THE REBATES THEREON AND INCREASES AND REDUCTIONS THEREOF

1. Definitions

In this Notice, a word or expression that has been defined in the Act or in the e-Road Regulations has the same meaning and:

discount	means a rebate as contemplated in section 27(3) of the Act;
GFIP toll roads	means the roads comprising the Gauteng Freeway Improvement Project, which are N1 sections 20 and 21, N3 section 12, N4 section 1 and N12 sections 18 and 19 (as declared by Government Notices No. 349 to 354 in Government Gazette No.30912 of 28 March 2008); and R21 sections 1 and 2 (as declared by Government Notice No. R.800 in Government Gazette No. 31273 of 28 July 2008);
grace period	means in respect of: <ul style="list-style-type: none"> (a) a registered user, 31 days from the date and time that an e-toll transaction occurs; and (b) an alternate user who is not a registered user, seven days from the date and time that an e-toll transaction occurs;
standard tariff	means the toll amount used to calculate a discount, except a discount for an alternate user, that may apply; and
tariff	means the amount of toll as determined by the Minister in terms of section 27(3)(a) of the Act.

2. Users of the GFIP-toll roads and the toll payable by those users

2.1 Subject to any exemption that may be granted in terms of the Act, tolls shall be levied by the Agency for every e-toll transaction on the GFIP-toll roads and shall be payable by every user of the GFIP-toll roads by not later than the expiry of the applicable grace period.

2.2 Users of the GFIP-toll roads are liable to pay toll, for each e-toll transaction, in the amount of the standard tariff or a tariff, which standard tariff or tariff is determined by:

- 2.2.1 the class of motor vehicle used on the GFIP-toll roads, contemplated in paragraph 4; and

- 2.2.2 the means by which the passage of a motor vehicle beneath a gantry is identified and the liability to pay toll recorded and the means of payment, including pre-payment of toll liability as contemplated in paragraph 3.

3. Tariffs

Tariffs for registered users, non-registered e-tag users, and alternate users

- 3.1 The standard tariffs and tariffs for the following users, differentiated according to the Class of motor vehicle, are set out in Table 1.

- 3.2 In respect of an e-toll transaction:

- 3.2.1 a registered e-tag user pays the tariff set out in Column 3 of Table 1 for the particular class of motor vehicle;
- 3.2.2 a non-registered e-tag user pays the tariff set out in Column 4 of Table 1 for the particular class of motor vehicle;
- 3.2.3 a registered VLN user pays the tariff set out in Column 5 of Table 1 for the particular class of motor vehicle; and
- 3.2.4 an alternate user pays the tariff set out in Column 6 of Table 1 for the particular class of motor vehicle.

- 3.3 Explanatory note on categories of user as referred to in 3.2 above and as defined in the e-Road Regulations:

- 3.3.1 Users must note that notwithstanding registration with the Agency or being identified by an e-tag or making payment of toll within the grace period, users will only be classified in the categories referred to in 3.2.1, 3.2.2 and 3.2.3 above if such users meet the specific criteria relating to such user at the time of an e-toll transaction and as defined in the e-Road Regulations;
- 3.3.2 the specific criteria referred to in 3.3.1 include sufficient funds in his or her e-toll account to pay the toll that applies to the e-toll transaction, or such user has linked his or her e-toll account to a payment method acceptable to the Agency, or such user has an agreement with the Agency to pay for e-toll transactions on another basis;
- 3.3.3 a user who does not fall within the aforementioned categories referred to in 3.2.1, 3.2.2 and 3.2.3 above will be classified, at the time of an e-toll transaction, as an alternate user and will pay the toll applicable to an alternate user (Column 6, Table 1), subject to being entitled to a discount on this tariff if payment, in full, is received within the grace period and if not within the grace period no later than within 30 days of the date of the invoice or notice issued by the Agency.

Tariffs include VAT

- 3.4 The tariffs include value-added tax (VAT) as provided for in the Value- Added Tax Act, 1991 (Act No. 89 of 1991).

Table 1: Tariffs for motor vehicle class: Class A1					
Plaza name and place (Column 1)	Standard tariff (Column 2)	Tariff to be paid by registered e-tag users (Column 3)	Tariff to be paid by non-registered e-tag users (Column 4)	Tariff to be paid by registered VLN users (Column 5)	Tariff to be paid by alternate users (Column 6)
N1					
1. Barbet (N1-21)	R2,13	R2,13	R2,13	R2,13	R4,26
2. Mossie (N1-21)	R2,13	R2,13	R2,13	R2,13	R4,26
3. Indlazi (N1-21)	R2,07	R2,07	R2,07	R2,07	R4,14
4. Pikoko (N1-21)	R2,07	R2,07	R2,07	R2,07	R4,14
5. Ivusi (N1-21)	R1,96	R1,96	R1,96	R1,96	R3,92
6. Flamingo (N1-21)	R1,96	R1,96	R1,96	R1,96	R3,92
7. Ihobe (N1-21)	R2,39	R2,39	R2,39	R2,39	R4,78
8. Sunbird (N1-20)	R2,39	R2,39	R2,39	R2,39	R4,78
9. Tarentaal (N1-20)	R1,83	R1,83	R1,83	R1,83	R3,66
10. Blouvalk (N1-20)	R1,83	R1,83	R1,83	R1,83	R3,66
11. Owl (N1-20)	R2,28	R2,28	R2,28	R2,28	R4,56
12. Pelican (N1-20)	R2,28	R2,28	R2,28	R2,28	R4,56
13. King Fisher (N1-20)	R2,02	R2,02	R2,02	R2,02	R4,04
14. Ukhhozi (N1-20)	R2,02	R2,02	R2,02	R2,02	R4,04
15. Fiscal (N1-20)	R1,79	R1,79	R1,79	R1,79	R3,58
16. Stork (N1-20)	R1,79	R1,79	R1,79	R1,79	R3,58
17. Ilowe (N1-20)	R0,43	R0,43	R0,43	R0,43	R0,86
N3					
18. Leeba (N3-12)	R1,53	R1,53	R1,53	R1,53	R3,06
19. Ibis (N3-12)	R1,53	R1,53	R1,53	R1,53	R3,06
20. Kiewiet (N3-12)	R1,64	R1,64	R1,64	R1,64	R3,28
21. Kwikie (N3-12)	R1,64	R1,64	R1,64	R1,64	R3,28
22. Starling (N3-12)	R1,75	R1,75	R1,75	R1,75	R3,50
23. Rooivink (N3-12)	R1,75	R1,75	R1,75	R1,75	R3,50
24. Mpshe (N3-12)	R1,41	R1,41	R1,41	R1,41	R2,82
25. Oxpecker (N3-12)	R1,41	R1,41	R1,41	R1,41	R2,82
N12					
28. Phakwe (N12-18)	R1,58	R1,58	R1,58	R1,58	R3,16
29. Thaha (N12-18)	R2,24	R2,24	R2,24	R2,24	R4,48
30. Lenong (N12-18)	R2,39	R2,39	R2,39	R2,39	R4,78
31. Lekgwaba (N12-18)	R1,73	R1,73	R1,73	R1,73	R3,46
32. Loerie (N12-19)	R2,34	R2,34	R2,34	R2,34	R4,68
33. Gull (N12-19)	R2,34	R2,34	R2,34	R2,34	R4,68
34. Ilanda (N12-19)	R1,73	R1,73	R1,73	R1,73	R3,46
35. Bee-eater (N12-19)	R1,73	R1,73	R1,73	R1,73	R3,46
R21					
37. Hadedu (R21-1)	R1,73	R1,73	R1,73	R1,73	R3,46
38. Ntsu (R21-1)	R1,73	R1,73	R1,73	R1,73	R3,46
39. Heron (R21-1)	R2,11	R2,11	R2,11	R2,11	R4,22
40. Bluecrane (R21-1)	R2,11	R2,11	R2,11	R2,11	R4,22
41. Swael (R21-2)	R2,98	R2,98	R2,98	R2,98	R5,96
42. Letata (R21-2)	R2,98	R2,98	R2,98	R2,98	R5,96
43. Swan (R21-2)	R2,45	R2,45	R2,45	R2,45	R4,90
44. Weaver (R21-2)	R2,45	R2,45	R2,45	R2,45	R4,90
45. Hornbill (R21-2)	R1,30	R1,30	R1,30	R1,30	R2,60
N12					
47. Ugaga (N12-19)	R1,96	R1,96	R1,96	R1,96	R3,92

Table 1: Tariffs for motor vehicle class: Class A2					
Plaza name and place (Column 1)	Standard tariff (Column 2)	Tariff to be paid by registered e-tag users (Column 3)	Tariff to be paid by non-registered e-tag users (Column 4)	Tariff to be paid by registered VLN users (Column 5)	Tariff to be paid by alternate users (Column 6)
N1					
1. Barbet (N1-21)	R3,55	R3,55	R3,55	R3,55	R7,10
2. Mossie (N1-21)	R3,55	R3,55	R3,55	R3,55	R7,10
3. Indlazi (N1-21)	R3,44	R3,44	R3,44	R3,44	R6,88
4. Pikoko (N1-21)	R3,44	R3,44	R3,44	R3,44	R6,88
5. Ivusi (N1-21)	R3,27	R3,27	R3,27	R3,27	R6,54
6. Flamingo (N1-21)	R3,27	R3,27	R3,27	R3,27	R6,54
7. Ihobe (N1-21)	R3,98	R3,98	R3,98	R3,98	R7,96
8. Sunbird (N1-20)	R3,98	R3,98	R3,98	R3,98	R7,96
9. Tarentaal (N1-20)	R3,05	R3,05	R3,05	R3,05	R6,10
10. Blouvalk (N1-20)	R3,05	R3,05	R3,05	R3,05	R6,10
11. Owl (N1-20)	R3,79	R3,79	R3,79	R3,79	R7,58
12. Pelican (N1-20)	R3,79	R3,79	R3,79	R3,79	R7,58
13. King Fisher (N1-20)	R3,37	R3,37	R3,37	R3,37	R6,74
14. Ukhozi (N1-20)	R3,37	R3,37	R3,37	R3,37	R6,74
15. Fiscal (N1-20)	R2,98	R2,98	R2,98	R2,98	R5,96
16. Stork (N1-20)	R2,98	R2,98	R2,98	R2,98	R5,96
17. Ilowe (N1-20)	R0,71	R0,71	R0,71	R0,71	R1,42
N3					
18. Leeba (N3-12)	R2,56	R2,56	R2,56	R2,56	R5,12
19. Ibis (N3-12)	R2,56	R2,56	R2,56	R2,56	R5,12
20. Kiewiet (N3-12)	R2,73	R2,73	R2,73	R2,73	R5,46
21. Kwikkie (N3-12)	R2,73	R2,73	R2,73	R2,73	R5,46
22. Starling (N3-12)	R2,91	R2,91	R2,91	R2,91	R5,82
23. Rooivink (N3-12)	R2,91	R2,91	R2,91	R2,91	R5,82
24. Mpshe (N3-12)	R2,34	R2,34	R2,34	R2,34	R4,68
25. Oxpecker (N3-12)	R2,34	R2,34	R2,34	R2,34	R4,68
N12					
28. Phakwe (N12-18)	R2,63	R2,63	R2,63	R2,63	R5,26
29. Thaha (N12-18)	R3,73	R3,73	R3,73	R3,73	R7,46
30. Lenong (N12-18)	R3,98	R3,98	R3,98	R3,98	R7,96
31. Lekgwaba (N12-18)	R2,88	R2,88	R2,88	R2,88	R5,76
32. Loerie (N12-19)	R3,91	R3,91	R3,91	R3,91	R7,82
33. Gull (N12-19)	R3,91	R3,91	R3,91	R3,91	R7,82
34. Ilanda (N12-19)	R2,88	R2,88	R2,88	R2,88	R5,76
35. Bee-eater (N12-19)	R2,88	R2,88	R2,88	R2,88	R5,76
R21					
37. Hadedda (R21-1)	R2,88	R2,88	R2,88	R2,88	R5,76
38. Ntsu (R21-1)	R2,88	R2,88	R2,88	R2,88	R5,76
39. Heron (R21-1)	R3,51	R3,51	R3,51	R3,51	R7,02
40. Bluecrane (R21-1)	R3,51	R3,51	R3,51	R3,51	R7,02
41. Swael (R21-2)	R4,97	R4,97	R4,97	R4,97	R9,94
42. Letata (R21-2)	R4,97	R4,97	R4,97	R4,97	R9,94
43. Swan (R21-2)	R4,08	R4,08	R4,08	R4,08	R8,16
44. Weaver (R21-2)	R4,08	R4,08	R4,08	R4,08	R8,16
45. Hornbill (R21-2)	R2,17	R2,17	R2,17	R2,17	R4,34
N12					
47. Ugaga (N12-19)	R3,27	R3,27	R3,27	R3,27	R6,54

Table 1: Tariffs for motor vehicle class: Class B					
Plaza name and place	Standard tariff	Tariff to be paid by registered e-tag users	Tariff to be paid by non-registered e-tag users	Tariff to be paid by registered VLN users	Tariff to be paid by alternate users
(Column 1)	(Column 2)	(Column 3)	(Column 4)	(Column 5)	(Column 6)
N1					
1. Barbet (N1-21)	R8,88	R8,88	R8,88	R8,88	R17,76
2. Mossie (N1-21)	R8,88	R8,88	R8,88	R8,88	R17,76
3. Indlazi (N1-21)	R8,61	R8,61	R8,61	R8,61	R17,22
4. Pikoko (N1-21)	R8,61	R8,61	R8,61	R8,61	R17,22
5. Ivusi (N1-21)	R8,17	R8,17	R8,17	R8,17	R16,34
6. Flamingo (N1-21)	R8,17	R8,17	R8,17	R8,17	R16,34
7. Ihobe (N1-21)	R9,94	R9,94	R9,94	R9,94	R19,88
8. Sunbird (N1-20)	R9,94	R9,94	R9,94	R9,94	R19,88
9. Tarentaal (N1-20)	R7,63	R7,63	R7,63	R7,63	R15,26
10. Blouvalk (N1-20)	R7,63	R7,63	R7,63	R7,63	R15,26
11. Owl (N1-20)	R9,49	R9,49	R9,49	R9,49	R18,98
12. Pelican (N1-20)	R9,49	R9,49	R9,49	R9,49	R18,98
13. King Fisher (N1-20)	R8,43	R8,43	R8,43	R8,43	R16,86
14. Ukhozi (N1-20)	R8,43	R8,43	R8,43	R8,43	R16,86
15. Fiscal (N1-20)	R7,46	R7,46	R7,46	R7,46	R14,92
16. Stork (N1-20)	R7,46	R7,46	R7,46	R7,46	R14,92
17. Ilowe (N1-20)	R1,78	R1,78	R1,78	R1,78	R3,56
N3					
18. Leebea (N3-12)	R6,39	R6,39	R6,39	R6,39	R12,78
19. Ibis (N3-12)	R6,39	R6,39	R6,39	R6,39	R12,78
20. Kiewiet (N3-12)	R6,83	R6,83	R6,83	R6,83	R13,66
21. Kwikkie (N3-12)	R6,83	R6,83	R6,83	R6,83	R13,66
22. Starling (N3-12)	R7,28	R7,28	R7,28	R7,28	R14,56
23. Rooivink (N3-12)	R7,28	R7,28	R7,28	R7,28	R14,56
24. Mpshe (N3-12)	R5,86	R5,86	R5,86	R5,86	R11,72
25. Oxpecker (N3-12)	R5,86	R5,86	R5,86	R5,86	R11,72
N12					
28. Phakwe (N12-18)	R6,57	R6,57	R6,57	R6,57	R13,14
29. Thaha (N12-18)	R9,32	R9,32	R9,32	R9,32	R18,64
30. Lenong (N12-18)	R9,94	R9,94	R9,94	R9,94	R19,88
31. Lekgwaba (N12-18)	R7,19	R7,19	R7,19	R7,19	R14,38
32. Loerie (N12-19)	R9,76	R9,76	R9,76	R9,76	R19,52
33. Gull (N12-19)	R9,76	R9,76	R9,76	R9,76	R19,52
34. Ilanda (N12-19)	R7,19	R7,19	R7,19	R7,19	R14,38
35. Bee-eater (N12-19)	R7,19	R7,19	R7,19	R7,19	R14,38
R21					
37. Hadede (R21-1)	R7,19	R7,19	R7,19	R7,19	R14,38
38. Ntsu (R21-1)	R7,19	R7,19	R7,19	R7,19	R14,38
39. Heron (R21-1)	R8,78	R8,78	R8,78	R8,78	R17,56
40. Bluecrane (R21-1)	R8,78	R8,78	R8,78	R8,78	R17,56
41. Swael (R21-2)	R12,43	R12,43	R12,43	R12,43	R24,86
42. Letata (R21-2)	R12,43	R12,43	R12,43	R12,43	R24,86
43. Swan (R21-2)	R10,21	R10,21	R10,21	R10,21	R20,42
44. Weaver (R21-2)	R10,21	R10,21	R10,21	R10,21	R20,42
45. Hornbill (R21-2)	R5,41	R5,41	R5,41	R5,41	R10,82
N12					
47. Ugaga (N12-19)	R8,17	R8,17	R8,17	R8,17	R16,34

Table 1: Tariffs for motor vehicle class: Class C					
Plaza name and place (Column 1)	Standard tariff (Column 2)	Tariff to be paid by registered e-tag users (Column 3)	Tariff to be paid by non-registered e-tag users (Column 4)	Tariff to be paid by registered VLN users (Column 5)	Tariff to be paid by alternate users (Column 6)
N1					
1. Barbet (N1-21)	R17,75	R17,75	R17,75	R17,75	R35,50
2. Mossie (N1-21)	R17,75	R17,75	R17,75	R17,75	R35,50
3. Indlazi (N1-21)	R17,22	R17,22	R17,22	R17,22	R34,44
4. Pikoko (N1-21)	R17,22	R17,22	R17,22	R17,22	R34,44
5. Ivusi (N1-21)	R16,33	R16,33	R16,33	R16,33	R32,66
6. Flamingo (N1-21)	R16,33	R16,33	R16,33	R16,33	R32,66
7. Ihobe (N1-21)	R19,88	R19,88	R19,88	R19,88	R39,76
8. Sunbird (N1-20)	R19,88	R19,88	R19,88	R19,88	R39,76
9. Tarentaal (N1-20)	R15,27	R15,27	R15,27	R15,27	R30,54
10. Blouvalk (N1-20)	R15,27	R15,27	R15,27	R15,27	R30,54
11. Owl (N1-20)	R18,97	R18,97	R18,97	R18,97	R37,94
12. Pelican (N1-20)	R18,97	R18,97	R18,97	R18,97	R37,94
13. King Fisher (N1-20)	R16,86	R16,86	R16,86	R16,86	R33,72
14. Ukhozi (N1-20)	R16,86	R16,86	R16,86	R16,86	R33,72
15. Fiscal (N1-20)	R14,91	R14,91	R14,91	R14,91	R29,82
16. Stork (N1-20)	R14,91	R14,91	R14,91	R14,91	R29,82
17. Ilowe (N1-20)	R3,55	R3,55	R3,55	R3,55	R7,10
N3					
18. Leeba (N3-12)	R12,78	R12,78	R12,78	R12,78	R25,56
19. Ibis (N3-12)	R12,78	R12,78	R12,78	R12,78	R25,56
20. Kiewiet (N3-12)	R13,67	R13,67	R13,67	R13,67	R27,34
21. Kwikkie (N3-12)	R13,67	R13,67	R13,67	R13,67	R27,34
22. Starling (N3-12)	R14,56	R14,56	R14,56	R14,56	R29,12
23. Rooivink (N3-12)	R14,56	R14,56	R14,56	R14,56	R29,12
24. Mpshe (N3-12)	R11,72	R11,72	R11,72	R11,72	R23,44
25. Oxpecker (N3-12)	R11,72	R11,72	R11,72	R11,72	R23,44
N12					
28. Phakwe (N12-18)	R13,14	R13,14	R13,14	R13,14	R26,28
29. Thaha (N12-18)	R18,64	R18,64	R18,64	R18,64	R37,28
30. Lenong (N12-18)	R19,88	R19,88	R19,88	R19,88	R39,76
31. Lekgwaba (N12-18)	R14,38	R14,38	R14,38	R14,38	R28,76
32. Loerie (N12-19)	R19,53	R19,53	R19,53	R19,53	R39,06
33. Gull (N12-19)	R19,53	R19,53	R19,53	R19,53	R39,06
34. Ilanda (N12-19)	R14,38	R14,38	R14,38	R14,38	R28,76
35. Bee-eater (N12-19)	R14,38	R14,38	R14,38	R14,38	R28,76
R21					
37. Hadedda (R21-1)	R14,38	R14,38	R14,38	R14,38	R28,76
38. Ntsu (R21-1)	R14,38	R14,38	R14,38	R14,38	R28,76
39. Heron (R21-1)	R17,55	R17,55	R17,55	R17,55	R35,10
40. Bluecrane (R21-1)	R17,55	R17,55	R17,55	R17,55	R35,10
41. Swael (R21-2)	R24,85	R24,85	R24,85	R24,85	R49,70
42. Letata (R21-2)	R24,85	R24,85	R24,85	R24,85	R49,70
43. Swan (R21-2)	R20,41	R20,41	R20,41	R20,41	R40,82
44. Weaver (R21-2)	R20,41	R20,41	R20,41	R20,41	R40,82
45. Hornbill (R21-2)	R10,83	R10,83	R10,83	R10,83	R21,66
N12					
47. Ugaga (N12-19)	R16,33	R16,33	R16,33	R16,33	R32,66

4. Classes of motor vehicles

4.1 The classes of motor vehicles for the purposes of the GFIP-toll roads are set out in Table 3.

4.2 To qualify for a specific motor vehicle class, the motor vehicle must have the dimensions set out in Table 3.

Table 3: Classes of motor vehicles

Class	Motor vehicle type	Dimensions of motor vehicle
A1	Motor cycles	Length under 3,0 metres Width under 1,3 metres Height under 2,5 metres
A2	Light motor vehicles (excluding motor cycles and only if the motor vehicle without any trailer does not qualify as a Class B or C motor vehicle)	Length under 6,0 metres Height under 2,5 metres Trailers that meet the criteria below are not considered when measuring dimensions for light motor vehicles: <ul style="list-style-type: none"> • It is designed or adapted to be drawn by a tow bar that is attached to a Class A2 motor vehicle. • It is not self-propelled. • It has a centre axle or centre axles. • the gross vehicle mass is not more than 3 500 kilograms. <p>This means a motor vehicle under 6,0 metres with a trailer that makes the total length of both vehicles more than 6,0 metres will still be classified as a Class A2 motor vehicle.</p> <p>If the motor vehicle is drawing a semi-trailer, the motor vehicle combination does not qualify as a Class A2 light motor vehicle. This is regardless of whether or not the motor vehicle drawing the semi-trailer is under 6, 0 metres or not. A semi-trailer has the meaning given to it in the National Road Traffic Act.</p>
B	Small heavy motor vehicles (but only if the motor vehicle does not qualify as a Class C motor vehicle)	Length, including any trailer, of 6,0 metres or more, but not over 12,5 metres or Length, including any trailer, of under 6,0 metres and height of 2,5 metres or more
C	Large heavy motor vehicles	Length, including any trailer, of more than 12,5 metres

5. Discounts applying to tariffs

The sum of all discounts in respect of an e-toll transaction may not exceed the amount of toll payable in respect of such e-toll transaction.

Types of discount up to the end of the grace period

5.1 There are three types of discount that will be applied if payment for an e-toll transaction is made within the grace period:

5.1.1 time-of-day discount;

5.1.2 frequent user discount; and

5.1.3 grace period discount for alternate users,

which discounts are described more fully and apply in the circumstances and subject to the conditions as set out below.

5.2 The time-of-day discount and frequent user discount are calculated using the standard tariff set out in Column 2 of Table 1 for the particular motor vehicle class.

5.3 All discounts apply to a specific motor vehicle and not to an e-toll account that may be used to discharge liability for toll.

Types of additional discount applicable to alternate user

5.4 There is one additional discount that shall apply to alternate users after an e-toll transaction but within 30 days of the date of the invoice or notice issued by the Agency, which discount is described more fully and applies in the circumstances and subject to the conditions as set out below.

Time-of-day discount

A discount based on the time of day

5.5 The time-of-day discount gives a discount to users who use the GFIP-toll roads at certain times.

5.6 Subject to 5.9 below, the time-of-day discount applies to all users of the GFIP toll roads in all motor vehicle classes.

5.7 The time-of-day discount is applied through the Agency deducting from the tariff that the user who qualifies for the discount would ordinarily be liable to pay for the use of the motor vehicle on the GFIP-toll roads, an amount equal to a percentage of the standard tariff; the applicable percentage being that which corresponds with the time and day of use of the motor vehicle as reflected on Table 4 for the class of motor vehicle in question.

5.8 The Agency deducts the discount from the tariff that applies to the category of user and vehicle. It is in addition to any other discount that may apply to that user.

5.9 The time-of-day discount will not apply to a user who pays for an e-toll transaction after the expiry of the applicable grace period.

Table 4: Time of day discounts

Time-of-day discounts: Classes A1 and A2				
Time-of-day	Weekday	Saturday	Sunday	Public holiday
After 00:00 up to and including 05:00	48.3% of standard tariff deducted	48.3% of standard tariff deducted	48.3% of standard tariff deducted	48.3% of standard tariff deducted
After 05:00 up to and including 06:00	19.3% of standard tariff deducted	48.3% of standard tariff deducted	48.3% of standard tariff deducted	
After 06:00 up to and including 10:00	0% of standard tariff deducted	29% of standard tariff deducted	28% of standard tariff deducted	
After 10:00 up to and including 14:00	9.7% of standard tariff deducted			
After 14:00 up to and including 18:00	0% of standard tariff deducted	48.3% of standard tariff deducted	48.3% of standard tariff deducted	
After 18:00 up to and including 23:00	19.3% of standard tariff deducted	48.3% of standard tariff deducted	48.3% of standard tariff deducted	
After 23:00 up to and including 00:00	48.3% of standard tariff deducted	48.3% of standard tariff deducted	48.3% of standard tariff deducted	

Time-of-day discounts: Classes B and C				
Time of day	Weekday	Saturday	Sunday	Public holiday
After 00:00 up to and including 05:00	57.9% of standard tariff deducted	57.9% of standard tariff deducted	57.9% of standard tariff deducted	57.9% of standard tariff deducted
After 05:00 up to and including 06:00	48.3% of standard tariff deducted			
After 06:00 up to and including 08:30	0% of standard tariff deducted	48.3% of standard tariff deducted	48.3% of standard tariff deducted	
After 08:30 up to and including 16:00	38.6% of standard tariff deducted			
After 16:00 up to and including 18:00	0% of standard tariff deducted	57.9% of standard tariff deducted	57.9% of standard tariff deducted	
After 18:00 up to and including 19:00				
After 19:00 up to and including 23:00	48.3% of standard tariff deducted	57.9% of standard tariff deducted	57.9% of standard tariff deducted	
After 23:00 up to and including 00:00	57.9% of standard tariff deducted	57.9% of standard tariff deducted	57.9% of standard tariff deducted	

Discounts for certain frequent users who reach the maximum threshold per month

- 5.10 The frequent user discount only applies to registered e-tag users and registered VLN users.
- 5.11 The frequent user discount is a discount on the tariff shown in Column 3 of Table 1 (registered e-tag users) or Column 5 of Table 1 (registered VLN users), as applicable and this frequent user discount:
- 5.11.1 is based on how often a registered e-tag user or registered VLN user uses the GFIP-toll roads in a specific motor vehicle in a calendar month;
 - 5.11.2 applies where the frequency of use of a motor vehicle in a calendar month, expressed as the total monetary value of all e-toll transactions incurred using that motor vehicle in that calendar month, reaches the threshold stipulated in Table 5;
 - 5.11.3 applies separately to each motor vehicle used on the GFIP-toll roads;
 - 5.11.4 does not apply to the cumulative use of all vehicles driven on the GFIP-toll roads by a user in a calendar month;
 - 5.11.5 is applied by the Agency by deducting from the tariff shown in Column 3 of Table 1 (registered e-tag users) or Column 5 of Table 1 (registered VLN users), as applicable the value of the percentage reflected in Table 5 applicable to the corresponding threshold value;
 - 5.11.6 applies only to those e-toll transactions or portions thereof that occur when the threshold value has been reached and only for the remainder of that calendar month, but does not serve to reduce the liability for toll already incurred prior to that threshold being reached; and
 - 5.11.7 does not in any circumstances entitle a user to claim back from the Agency any toll which the user has already paid or which the user has become liable to pay for his or her use of the GFIP-toll roads.
- 5.12 The value of the e-toll transactions in a calendar month is calculated from the tariffs shown in Column 3 of Table 1 (registered e-tag users) or Column 5 of Table 1 (registered VLN users), as applicable, less any time-of-day and any other applicable discounts.
- 5.13 Once the threshold value reflected in the last row of Table 5 has been reached for the class of motor vehicle in question, the user of the motor vehicle that reaches that threshold value will, for the remainder of the month in which the threshold value is reached, incur no further liability for toll for e-toll transactions in respect of that motor vehicle, which is expressed in Table 5 as a 100% discount on all further e-toll transactions in that calendar month.

Table 5: Frequent-user discounts

Percentage discount applicable to e-toll transactions (in terms of paragraphs 5.10 to 5.14)	Threshold value on total e-toll transactions calculated from the tariffs shown in Column 3 of Table 1 or Column 5 of Table 1, as applicable for the calendar month, less time-of-day and any other applicable discounts			
	Class A1 motor vehicles	Class A2 motor vehicles	Class B motor vehicles	Class C motor vehicles
0% off	R 0 up to R 148.00	R 0 up to R 266.00	R 0 up to R1 035.00	R 0 up to R3 430.00
100% off	Above R 148.00	Above R 266.00	Above R1 035.00	Above R3 430.00

5.14 The threshold values for the frequent user discount set out in Table 5, shall be adjusted annually in accordance with the terms of paragraph 5.19 of this notice.

5.15 Subject to complying with the requirements of the frequent user discounts as contemplated in paragraphs 5.10 to 5.14, frequent user discounts will also apply to alternate users with a registered e-tag or registered VLN who pay toll within 30 days of the date of an invoice or notice issued by the Agency.

Discounts for alternate users within the grace period

5.16 An alternate user who pays within the grace period is entitled to a discount that after the discount applies the user pays the amount equal to the amount set out in Column 2 of Table 1.

Discounts for alternate users after the grace period

5.17 An alternate user who pays toll, after the grace period but within 30 days of the date of the invoice or notice issued by the Agency, will be granted a discount, at the time of payment, such that after such discount is applied the alternate user will, in respect of an invoice or notice where payment is made in full, pay an amount equal to 50 % of the tariff in Column 6 of Table 1.

5.18 Payment by an alternate user to the Agency, as contemplated in 5.16 and 5.17 above, must be made subject to the conditions the Agency may determine and make known.

Adjustment of tariffs and amounts

5.19 The tariffs and amounts displayed in this notice may be adjusted by a determination of the Minister annually: Provided that such adjustment shall not exceed the Consumer Price Index calculated for the preceding 12 months.

DEPARTEMENT VAN VERVOER

NO. 401

28 MAART 2018

**DIE WET OP DIE SUID-AFRIKAANSE NASIONALE PADAGENTSKAP BEPERK EN NASIONALE PAAIE,
1998 (Wet Nr. 7 van 1998)****GAUTENG DEURPAD VERBETERINGSPROJEK, TOLPAAIE: PUBLIKASIE VAN TOL**

Die Hoof van die Departement van Vervoer maak hiermee in die Bylae hierby bekend dat, ingevolge artikel 27(3)(c) van die Wet op die Suid-Afrikaanse Nasionale Padagentskap Beperk en Nasionale Paaie, 1998 (Wet Nr. 7 van 1998), die Minister van Vervoer, ingevolge artikel 27(3)(a) van die Wet, en op aanbeveling van die Suid-Afrikaanse Nasionale Padagentskap MSB Beperk, die tol wat op ondergenoemde paaie gehef moet word, die korting daarop en die verhogings en verminderings daarvan, as volg bepaal:

Soos verklaar deur Goewermentskennisgewing Nr. 349 tot 354 in Staatskoerant Nr. 30912 van 28 Maart 2008

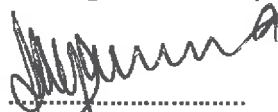
- N1 gedeelte 20 en 21
- N3 gedeelte 12
- N4 gedeelte 1
- N12 gedeelte 18 en 19

Soos verklaar deur Goewermentskennisgewing Nr. 800 in Staatskoerant Nr. 31273 van 28 Julie 2008

- R21 gedeelte 1 en 2

Die Minister van Vervoer het ook, op aanbeveling van die Nasionale Padagentskap MSB Beperk en ingevolge artikel 27(3)(d) van die Wet, bepaal dat die tol wat ingevolge hierdie Kennisgewing gehef mag word, betaalbaar sal wees vanaf 12 April 2018 ("Effektiewe Datum").

Hierdie kennisgewing herroep en vervang alle vorige Toltarief Kennisgewings ten opsigte van die voorafgenoemde tolpaaie vanaf die Effektiewe datum.



.....
Mnr. M Mokonyama

WAARNEMENDE DIREKTEUR- GENERAAL: VERVOER

BYLAE

**WET OP DIE SUID-AFRIKAANSE NASIONALE PADAGENTSAP BEPERK EN
NASIONALE PAAIE, 1998 (WET Nr. 7 van 1998)**

**GAUTENG DEURPAD VERBETERINGSPROJEK, TOLPAAIE: PUBLIKASIE VAN DIE TOL VIR DIE
VERSKILLENDE KATEGORIEË VAN PADGEBRUIKERS EN DIE KLASSE VAN MOTORVOERTUIG EN DIE
KORTING DAAROP EN DIE VERHOOGING OF VERMINDERING DAARVAN**

1. Woordomsrywings

In hierdie kennisgewing het 'n woord of uitdrukking wat in die Wet of in die e-Padregulasies omskryf is dieselfde betekenis en beteken:

afslag	'n korting ingevolge artikel 27(3) van die Wet
GDVP-tolpaaie	beteken die Gauteng Deurpad Verbeteringsprojek (GDVP) tolpaaie, wat insluit: N1 gedeelte 20 en 21; N3 gedeelte 12; N4 gedeelte 1; en N12 gedeelte 18 en 19 (soos verklaar deur Goewermentskennisgewing Nr. 349 tot 354 in Staatskoerant Nr.30912 van 28 Maart 2008); en R21 gedeelte 1 en 2 (soos verklaar deur Goewermentskennisgewing Nr. 800 in Staatskoerant Nr. 31273 van 28 Julie 2008);
grasietydperk	ten opsigte van - <ul style="list-style-type: none"> (a) 'n geregistreerde gebruiker, 31 dae vanaf die datum en tyd wat die e-toltransaksie plaasvind; en (b) 'n alternatiewe gebruiker wat nie 'n geregistreerde gebruiker is nie, sewe dae vanaf die datum en tyd wat die e-toltransaksie plaasvind ;
standaard-tarief	die tolbedrag wat gebruik word om die die afslag te bereken, behalwe vir die afslag vir 'n alternatiewe gebruiker wat van toepassing mag wees; en
tarief	die bedrag van tol soos bepaal deur die Minister ingevolge artikel 27(3)(a) van die Wet.

2. Gebruikers van die GDVP – tolpaaie en die tol betaalbaar deur sodanige gebruikers

2.1 Onderhewig aan enige vrystelling wat ingevolge die Wet toegestaan mag word, moet tol deur die Agentskap gehef word vir elke e-toltransaksie op die GDVP-tolpaaie en moet die e-tol deur elke gebruiker van die GDVP tolpaaie betaal word teen nie later as die verstryking van die betrokke grasietydperk nie.

2.2 Gebruikers van die GDVP-tolpaaie is aanspreeklik om tol te betaal, vir elke toltransaksie teen die bedrag van die standaardtarief of 'n tarief, welke standaardtarief of tarief bepaal word deur:

2.2.1 die klas voertuig wat op die GDVP-tolpaaie gebruik word soos bedoel in paragraaf 4; en

- 2.2.2 die wyse waarop 'n motorvoertuig se deurgang onder 'n tolportaal geïdentifiseer word en die verantwoordelikheid om tol te betaal en die wyse van betaling, insluitend voorafbetaling van tol-aanspreeklikheid soos bedoel in paragraaf 3.

3. Tariewe

Tariewe vir geregistreerde gebruikers, nie-geregistreerde gebruikers, e-tag gebruikers en alternatiewe gebruikers

- 3.1 Die standaard tariewe en tariewe vir die volgende gebruikers wat onderskei word deur die klas motorvoertuig, word hieronder in Tabel 1 uiteengesit.
- 3.2 Ten opsigte van 'n e-toltransaksie--
- 3.2.1 'n geregistreerde e-tag gebruiker betaal die tarief soos in Kolom 3 van Tabel 1 uiteengesit, vir die besondere klas van motorvoertuig;
- 3.2.2 'n nie-geregistreerde e-tag gebruiker betaal die tarief soos in Kolom 4 van Tabel 1 uiteengesit, vir die besondere klas van motorvoertuig;
- 3.2.3 'n geregistreerde VLN gebruiker betaal die tarief soos in Kolom 5 van Tabel 1 uiteengesit, vir die besondere klas van motorvoertuig; en
- 3.2.4 'n alternatiewe gebruiker betaal die tarief soos in Kolom 6 van Tabel 1 uiteengesit, vir die besondere klas van motorvoertuig.
- 3.3 Verduidelikende nota ten opsigte van die verskillende kategorieë van gebruikers soos bedoel in 3.2 hierbo en soos omskryf in die e-Pad Regulasies:
- 3.3.1 Gebruikers moet daarop let dat desnieteenstaande die feit dat hulle by die Agentskap geregistreer is of dat hulle deur 'n e-tag geïdentifiseer word, of betaling maak gedurende die grasietydperk, gebruikers slegs as kategorie 3.2.1, 3.2.2 and 3.2.3 gekategoriseer sal word indien sodanige gebruikers die kriteria met betrekking tot sodanige gebruiker nakom ten tye van die e-toltransaksie en soos omskryf in die e-Pad Regulasies;
- 3.3.2 Die spesifieke kriteria bedoel in 3.3.1 sluit in, voldoende fondse in sy of haar e-tolrekening om die tol te betaal wat op die transaksie van toepassing is, of sodanige gebruiker het die betaling van sy rekening aan 'n betaalmetode gekoppel wat aanvaarbaar is vir die Agentskap of sodanige gebruiker het 'n ooreenkoms met die Agentskap vir die betaling van e-tol op 'n ander basis aangegaan;
- 3.3.3 'n Gebruiker wat nie binne die kategorieë bedoel in 3.2.1, 3.2.2 of 3.2.3 val ten tye van die e-toltransaksie nie sal as 'n alternatiewe gebruiker geklassifiseer word en die tol van toepassing op alternatiewe gebruikers (Kolom 6, Tabel 1) sal van toepassing wees, onderworpe daaraan dat die gebruiker geregtig is op 'n afslag op die tarief indien volle

betaling binne die grasietydperk ontvang word, en indien nie binne die grasietydperk nie, binne 30 dae vanaf die datum van die faktuur of kennisgewing uitgereik deur die Agentskap.

Tariewe sluit BTW in

- 3.4 Die Tariewe sluit Belasting op Toegevoegde Waarde (BTW), soos beoog in die Wet op Belasting op Toegevoegde Waarde, 1991 (Wet Nr. 89 van 1991), in.

Tabel 1: Tariewe vir motorvoertuigklas: Klas A1					
Plazanaam en –plek (Kolom 1)	Plazanaam en –plek (Kolom 2)	Plazanaam en –plek (Kolom 3)	Plazanaam en –plek (Kolom 4)	Plazanaam en –plek (Kolom 5)	Plazanaam en –plek (Kolom 6)
N1					
1. Barbet (N1-21)	R2,13	R2,13	R2,13	R2,13	R4,26
2. Mossie (N1-21)	R2,13	R2,13	R2,13	R2,13	R4,26
3. Indlazi (N1-21)	R2,07	R2,07	R2,07	R2,07	R4,14
4. Pikoko (N1-21)	R2,07	R2,07	R2,07	R2,07	R4,14
5. Ivusi (N1-21)	R1,96	R1,96	R1,96	R1,96	R3,92
6. Flamingo (N1-21)	R1,96	R1,96	R1,96	R1,96	R3,92
7. Ihobe (N1-21)	R2,39	R2,39	R2,39	R2,39	R4,78
8. Sunbird (N1-20)	R2,39	R2,39	R2,39	R2,39	R4,78
9. Tarentaal (N1-20)	R1,83	R1,83	R1,83	R1,83	R3,66
10. Blouvalk (N1-20)	R1,83	R1,83	R1,83	R1,83	R3,66
11. Owl (N1-20)	R2,28	R2,28	R2,28	R2,28	R4,56
12. Pelican (N1-20)	R2,28	R2,28	R2,28	R2,28	R4,56
13. King Fisher (N1-20)	R2,02	R2,02	R2,02	R2,02	R4,04
14. Ukhozi (N1-20)	R2,02	R2,02	R2,02	R2,02	R4,04
15. Fiscal (N1-20)	R1,79	R1,79	R1,79	R1,79	R3,58
16. Stork (N1-20)	R1,79	R1,79	R1,79	R1,79	R3,58
17. Ilowe (N1-20)	R0,43	R0,43	R0,43	R0,43	R0,86
N3					
18. Leeba (N3-12)	R1,53	R1,53	R1,53	R1,53	R3,06
19. Ibis (N3-12)	R1,53	R1,53	R1,53	R1,53	R3,06
20. Kiewiet (N3-12)	R1,64	R1,64	R1,64	R1,64	R3,28
21. Kwikkie (N3-12)	R1,64	R1,64	R1,64	R1,64	R3,28
22. Starling (N3-12)	R1,75	R1,75	R1,75	R1,75	R3,50
23. Rooivink (N3-12)	R1,75	R1,75	R1,75	R1,75	R3,50
24. Mpshe (N3-12)	R1,41	R1,41	R1,41	R1,41	R2,82
25. Oxpecker (N3-12)	R1,41	R1,41	R1,41	R1,41	R2,82
N12					
28. Phakwe (N12-18)	R1,58	R1,58	R1,58	R1,58	R3,16
29. Thaha (N12-18)	R2,24	R2,24	R2,24	R2,24	R4,48
30. Lenong (N12-18)	R2,39	R2,39	R2,39	R2,39	R4,78
31. Lekgwaba (N12-18)	R1,73	R1,73	R1,73	R1,73	R3,46
32. Loerie (N12-19)	R2,34	R2,34	R2,34	R2,34	R4,68
33. Gull (N12-19)	R2,34	R2,34	R2,34	R2,34	R4,68
34. Ilanda (N12-19)	R1,73	R1,73	R1,73	R1,73	R3,46
35. Bee-eater (N12-19)	R1,73	R1,73	R1,73	R1,73	R3,46
R21					
37. Hadedda (R21-1)	R1,73	R1,73	R1,73	R1,73	R3,46
38. Ntsu (R21-1)	R1,73	R1,73	R1,73	R1,73	R3,46
39. Heron (R21-1)	R2,11	R2,11	R2,11	R2,11	R4,22
40. Bluecrane (R21-1)	R2,11	R2,11	R2,11	R2,11	R4,22
41. Swael (R21-2)	R2,98	R2,98	R2,98	R2,98	R5,96
42. Letata (R21-2)	R2,98	R2,98	R2,98	R2,98	R5,96
43. Swan (R21-2)	R2,45	R2,45	R2,45	R2,45	R4,90
44. Weaver (R21-2)	R2,45	R2,45	R2,45	R2,45	R4,90
45. Hornbill (R21-2)	R1,30	R1,30	R1,30	R1,30	R2,60
N12					
47. Ugaga (N12-19)	R1,96	R1,96	R1,96	R1,96	R3,92

Tabel 1: Tariewe vir motorvoertuigklas: Klas A2					
Plazanaam en –plek (Kolom 1)	Plazanaam en –plek (Kolom 2)	Plazanaam en –plek (Kolom 3)	Plazanaam en –plek (Kolom 4)	Plazanaam en –plek (Kolom 5)	Plazanaam en –plek (Kolom 6)
N1					
1. Barbet (N1-21)	R3,55	R3,55	R3,55	R3,55	R7,10
2. Mossie (N1-21)	R3,55	R3,55	R3,55	R3,55	R7,10
3. Indlazi (N1-21)	R3,44	R3,44	R3,44	R3,44	R6,88
4. Pikoko (N1-21)	R3,44	R3,44	R3,44	R3,44	R6,88
5. Ivusi (N1-21)	R3,27	R3,27	R3,27	R3,27	R6,54
6. Flamingo (N1-21)	R3,27	R3,27	R3,27	R3,27	R6,54
7. Ihobe (N1-21)	R3,98	R3,98	R3,98	R3,98	R7,96
8. Sunbird (N1-20)	R3,98	R3,98	R3,98	R3,98	R7,96
9. Tarentaal (N1-20)	R3,05	R3,05	R3,05	R3,05	R6,10
10. Blouvalk (N1-20)	R3,05	R3,05	R3,05	R3,05	R6,10
11. Owl (N1-20)	R3,79	R3,79	R3,79	R3,79	R7,58
12. Pelican (N1-20)	R3,79	R3,79	R3,79	R3,79	R7,58
13. King Fisher (N1-20)	R3,37	R3,37	R3,37	R3,37	R6,74
14. Ukhozi (N1-20)	R3,37	R3,37	R3,37	R3,37	R6,74
15. Fiscal (N1-20)	R2,98	R2,98	R2,98	R2,98	R5,96
16. Stork (N1-20)	R2,98	R2,98	R2,98	R2,98	R5,96
17. Ilowe (N1-20)	R0,71	R0,71	R0,71	R0,71	R1,42
N3					
18. Leeba (N3-12)	R2,56	R2,56	R2,56	R2,56	R5,12
19. Ibis (N3-12)	R2,56	R2,56	R2,56	R2,56	R5,12
20. Kiewiet (N3-12)	R2,73	R2,73	R2,73	R2,73	R5,46
21. Kwikkie (N3-12)	R2,73	R2,73	R2,73	R2,73	R5,46
22. Starling (N3-12)	R2,91	R2,91	R2,91	R2,91	R5,82
23. Rooivink (N3-12)	R2,91	R2,91	R2,91	R2,91	R5,82
24. Mpshe (N3-12)	R2,34	R2,34	R2,34	R2,34	R4,68
25. Oxpecker (N3-12)	R2,34	R2,34	R2,34	R2,34	R4,68
N12					
28. Phakwe (N12-18)	R2,63	R2,63	R2,63	R2,63	R5,26
29. Thaha (N12-18)	R3,73	R3,73	R3,73	R3,73	R7,46
30. Lenong (N12-18)	R3,98	R3,98	R3,98	R3,98	R7,96
31. Lekgwaba (N12-18)	R2,88	R2,88	R2,88	R2,88	R5,76
32. Loerie (N12-19)	R3,91	R3,91	R3,91	R3,91	R7,82
33. Gull (N12-19)	R3,91	R3,91	R3,91	R3,91	R7,82
34. Ilanda (N12-19)	R2,88	R2,88	R2,88	R2,88	R5,76
35. Bee-eater (N12-19)	R2,88	R2,88	R2,88	R2,88	R5,76
R21					
37. Hadedda (R21-1)	R2,88	R2,88	R2,88	R2,88	R5,76
38. Ntsu (R21-1)	R2,88	R2,88	R2,88	R2,88	R5,76
39. Heron (R21-1)	R3,51	R3,51	R3,51	R3,51	R7,02
40. Bluecrane (R21-1)	R3,51	R3,51	R3,51	R3,51	R7,02
41. Swael (R21-2)	R4,97	R4,97	R4,97	R4,97	R9,94
42. Letata (R21-2)	R4,97	R4,97	R4,97	R4,97	R9,94
43. Swan (R21-2)	R4,08	R4,08	R4,08	R4,08	R8,16
44. Weaver (R21-2)	R4,08	R4,08	R4,08	R4,08	R8,16
45. Hornbill (R21-2)	R2,17	R2,17	R2,17	R2,17	R4,34
N12					
47. Ugaga (N12-19)	R3,27	R3,27	R3,27	R3,27	R6,54

Tabel 1: Tariewe vir motorvoertuigklas: Klas B

Plazanaam en –plek (Kolom 1)	Plazanaam en –plek (Kolom 2)	Plazanaam en –plek (Kolom 3)	Plazanaam en –plek (Kolom 4)	Plazanaam en –plek (Kolom 5)	Plazanaam en –plek (Kolom 6)
N1					
1. Barbet (N1-21)	R8,88	R8,88	R8,88	R8,88	R17,76
2. Mossie (N1-21)	R8,88	R8,88	R8,88	R8,88	R17,76
3. Indlazi (N1-21)	R8,61	R8,61	R8,61	R8,61	R17,22
4. Pikoko (N1-21)	R8,61	R8,61	R8,61	R8,61	R17,22
5. Ivusi (N1-21)	R8,17	R8,17	R8,17	R8,17	R16,34
6. Flamingo (N1-21)	R8,17	R8,17	R8,17	R8,17	R16,34
7. Ihobe (N1-21)	R9,94	R9,94	R9,94	R9,94	R19,88
8. Sunbird (N1-20)	R9,94	R9,94	R9,94	R9,94	R19,88
9. Tarentaal (N1-20)	R7,63	R7,63	R7,63	R7,63	R15,26
10. Blouvalk (N1-20)	R7,63	R7,63	R7,63	R7,63	R15,26
11. Owl (N1-20)	R9,49	R9,49	R9,49	R9,49	R18,98
12. Pelican (N1-20)	R9,49	R9,49	R9,49	R9,49	R18,98
13. King Fisher (N1-20)	R8,43	R8,43	R8,43	R8,43	R16,86
14. Ukhozi (N1-20)	R8,43	R8,43	R8,43	R8,43	R16,86
15. Fiscal (N1-20)	R7,46	R7,46	R7,46	R7,46	R14,92
16. Stork (N1-20)	R7,46	R7,46	R7,46	R7,46	R14,92
17. Ilowe (N1-20)	R1,78	R1,78	R1,78	R1,78	R3,56
N3					
18. Leeba (N3-12)	R6,39	R6,39	R6,39	R6,39	R12,78
19. Ibis (N3-12)	R6,39	R6,39	R6,39	R6,39	R12,78
20. Kiewiet (N3-12)	R6,83	R6,83	R6,83	R6,83	R13,66
21. Kwikkie (N3-12)	R6,83	R6,83	R6,83	R6,83	R13,66
22. Starling (N3-12)	R7,28	R7,28	R7,28	R7,28	R14,56
23. Rooivink (N3-12)	R7,28	R7,28	R7,28	R7,28	R14,56
24. Mpshe (N3-12)	R5,86	R5,86	R5,86	R5,86	R11,72
25. Oxpecker (N3-12)	R5,86	R5,86	R5,86	R5,86	R11,72
N12					
28. Phakwe (N12-18)	R6,57	R6,57	R6,57	R6,57	R13,14
29. Thaha (N12-18)	R9,32	R9,32	R9,32	R9,32	R18,64
30. Lenong (N12-18)	R9,94	R9,94	R9,94	R9,94	R19,88
31. Lekgwaba (N12-18)	R7,19	R7,19	R7,19	R7,19	R14,38
32. Loerie (N12-19)	R9,76	R9,76	R9,76	R9,76	R19,52
33. Gull (N12-19)	R9,76	R9,76	R9,76	R9,76	R19,52
34. Ilanda (N12-19)	R7,19	R7,19	R7,19	R7,19	R14,38
35. Bee-eater (N12-19)	R7,19	R7,19	R7,19	R7,19	R14,38
R21					
37. Hadeda (R21-1)	R7,19	R7,19	R7,19	R7,19	R14,38
38. Ntsu (R21-1)	R7,19	R7,19	R7,19	R7,19	R14,38
39. Heron (R21-1)	R8,78	R8,78	R8,78	R8,78	R17,56
40. Bluecrane (R21-1)	R8,78	R8,78	R8,78	R8,78	R17,56
41. Swael (R21-2)	R12,43	R12,43	R12,43	R12,43	R24,86
42. Letata (R21-2)	R12,43	R12,43	R12,43	R12,43	R24,86
43. Swan (R21-2)	R10,21	R10,21	R10,21	R10,21	R20,42
44. Weaver (R21-2)	R10,21	R10,21	R10,21	R10,21	R20,42
45. Hornbill (R21-2)	R5,41	R5,41	R5,41	R5,41	R10,82
N12					
47. Ugaga (N12-19)	R8,17	R8,17	R8,17	R8,17	R16,34

Tabel 1: Tariewe vir motorvoertuigklas: Klas C					
Plazanaam en –plek (Kolom 1)	Plazanaam en –plek (Kolom 2)	Plazanaam en –plek (Kolom 3)	Plazanaam en –plek (Kolom 4)	Plazanaam en –plek (Kolom 5)	Plazanaam en –plek (Kolom 6)
N1					
1. Barbet (N1-21)	R17,75	R17,75	R17,75	R17,75	R35,50
2. Mossie (N1-21)	R17,75	R17,75	R17,75	R17,75	R35,50
3. Indlazi (N1-21)	R17,22	R17,22	R17,22	R17,22	R34,44
4. Pikoko (N1-21)	R17,22	R17,22	R17,22	R17,22	R34,44
5. Ivusi (N1-21)	R16,33	R16,33	R16,33	R16,33	R32,66
6. Flamingo (N1-21)	R16,33	R16,33	R16,33	R16,33	R32,66
7. lhobe (N1-21)	R19,88	R19,88	R19,88	R19,88	R39,76
8. Sunbird (N1-20)	R19,88	R19,88	R19,88	R19,88	R39,76
9. Tarentaal (N1-20)	R15,27	R15,27	R15,27	R15,27	R30,54
10. Blouvalk (N1-20)	R15,27	R15,27	R15,27	R15,27	R30,54
11. Owl (N1-20)	R18,97	R18,97	R18,97	R18,97	R37,94
12. Pelican (N1-20)	R18,97	R18,97	R18,97	R18,97	R37,94
13. King Fisher (N1-20)	R16,86	R16,86	R16,86	R16,86	R33,72
14. Ukhozi (N1-20)	R16,86	R16,86	R16,86	R16,86	R33,72
15. Fiscal (N1-20)	R14,91	R14,91	R14,91	R14,91	R29,82
16. Stork (N1-20)	R14,91	R14,91	R14,91	R14,91	R29,82
17. llowe (N1-20)	R3,55	R3,55	R3,55	R3,55	R7,10
N3					
18. Leeba (N3-12)	R12,78	R12,78	R12,78	R12,78	R25,56
19. Ibis (N3-12)	R12,78	R12,78	R12,78	R12,78	R25,56
20. Kiewiet (N3-12)	R13,67	R13,67	R13,67	R13,67	R27,34
21. Kwikkie (N3-12)	R13,67	R13,67	R13,67	R13,67	R27,34
22. Starling (N3-12)	R14,56	R14,56	R14,56	R14,56	R29,12
23. Rooivink (N3-12)	R14,56	R14,56	R14,56	R14,56	R29,12
24. Mpshe (N3-12)	R11,72	R11,72	R11,72	R11,72	R23,44
25. Oxpecker (N3-12)	R11,72	R11,72	R11,72	R11,72	R23,44
N12					
28. Phakwe (N12-18)	R13,14	R13,14	R13,14	R13,14	R26,28
29. Thaha (N12-18)	R18,64	R18,64	R18,64	R18,64	R37,28
30. Lenong (N12-18)	R19,88	R19,88	R19,88	R19,88	R39,76
31. Lekgwaba (N12-18)	R14,38	R14,38	R14,38	R14,38	R28,76
32. Loerie (N12-19)	R19,53	R19,53	R19,53	R19,53	R39,06
33. Gull (N12-19)	R19,53	R19,53	R19,53	R19,53	R39,06
34. llanda (N12-19)	R14,38	R14,38	R14,38	R14,38	R28,76
35. Bee-eater (N12-19)	R14,38	R14,38	R14,38	R14,38	R28,76
R21					
37. Hadede (R21-1)	R14,38	R14,38	R14,38	R14,38	R28,76
38. Ntsu (R21-1)	R14,38	R14,38	R14,38	R14,38	R28,76
39. Heron (R21-1)	R17,55	R17,55	R17,55	R17,55	R35,10
40. Bluecrane (R21-1)	R17,55	R17,55	R17,55	R17,55	R35,10
41. Swael (R21-2)	R24,85	R24,85	R24,85	R24,85	R49,70
42. Letata (R21-2)	R24,85	R24,85	R24,85	R24,85	R49,70
43. Swan (R21-2)	R20,41	R20,41	R20,41	R20,41	R40,82
44. Weaver (R21-2)	R20,41	R20,41	R20,41	R20,41	R40,82
45. Hornbill (R21-2)	R10,83	R10,83	R10,83	R10,83	R21,66
N12					
47. Ugaga (N12-19)	R16,33	R16,33	R16,33	R16,33	R32,66

4. Klasse van motorvoertuie

- 4.1 Die klasse van motorvoertuie vir die doel van die GDVP-tolpaaie word in Tabel 3 hieronder weergegee.
- 4.2 Om vir 'n spesifieke motorvoertuig klas te kwalifiseer, moet die motorvoertuig die afmetings soos in die onderstaande tabel uiteengesit, hê.

Tabel 3: Klasse van motorvoertuie

Klas	Motorvoertuigtipe	Afmetings van motorvoertuig
A1	Motorfietse	Lengte onder 3,0 meter Breedte onder 1,3 meter Hoogte onder 2,5 meter
A2	Ligte motorvoertuie (uitsluitend motorfietse en slegs indien die motorvoertuig sonder 'n sleepwa nie as 'n Klas B en C motorvoertuig kwalifiseer nie))	Lengte onder 6,0 meter Hoogte onder 2,5 meter Sleepwaens wat aan die onderstaande vereistes voldoen, word nie in ag geneem wanneer afmetings vir ligte motorvoertuie geneem word nie: <ol style="list-style-type: none"> 1. Dit is ontwerp of aangepas om deur 'n sleepstang van 'n Klas A2 motorvoertuig, getrek te word. 2. Dit is nie selfaangedrewe nie. 3. Dit 'n sentrale as of sentrale asse het. 4. Die bruto voertuigmassa is nie meer as 3 500 kilogram nie. Dit beteken dat 'n motorvoertuig korter as 6,0 meter met 'n sleepwa wat die totale lengte van beide voertuie langer as 6,0 meter maak, as 'n Klas A2 voertuig geklassifiseer word. Indien die motorvoertuig 'n leunwa sleep, kwalifiseer die motorvoertuig kombinasie nie as 'n Klas A2 ligte motorvoertuig nie. Dit is ongeag of die motorvoertuig wat die leunwa sleep korter as 6,0 meter is of nie. 'n Leunwa se betekenis word in die Nasionale Padverkeerswet omskryf.
B	Klein swaar motorvoertuie (maar slegs indien die motorvoertuig nie as 'n klas A2 of Klas C motorvoertuig kwalifiseer nie)	Lengte, insluitende 'n sleepwa, van 6,0 meter of meer, maar nie meer as 12,5 meter nie of Lengte, insluitende enige sleepwa, van 6,0 meter en hoogte van 2,5 meter of meer
C	Groot swaar motorvoertuie (maar slegs indien die motorvoertuig nie as 'n Klas A2 of Klas B motorvoertuig kwalifiseer nie)	Lengte, insluitende enige sleepwa, van meer as 12,5 meter

5. Afslag wat op Tariewe van toepassing is

Die som van al die kortings ten opsigte van 'n e-toltransaksie mag nie die bedrag van tol betaalbaar met betrekking tot sodanige transaksie, oorskryf nie;

Soorte afslag tot aan einde van die grasietydperk

5.1 Daar is drie soorte afslag wat van toepassing is indien betaling gedurende die grasietydperk gemaak is:

5.1.1 tyd-van-die-dag afslag;

5.1.2 gereelde gebruikerafslag

5.1.3 grasietydperk afslag vir alternatiewe gebruikers,

en sodanige afslag word volledig beskryf en is van toepassing onder die omstandighede en onderhewig aan die voorwaardes soos hieronder uiteengesit.

5.2 Tyd-van-die-dag-afslag en gereelde gebruikerafslag word op die standaardtarief soos in Kolom 2 van Tabel 1 uiteengesit, bereken, gebaseer op die besondere motorvoertuigklas.

5.3 Alle afslaë is van toepassing op 'n spesifieke motorvoertuig en nie op 'n e-tolrekening wat gebruik kan word om aanspreeklikheid vir tol te vereffen, nie.

Soorte afslag na die grasietydperk verval het

5.4 Daar is een soort afslag wat van toepassing is na die grasietydperk verval het, en dié afslag is die enigste afslag van toepassing na die grasietydperk en dit is die afslag vir alternatiewe gebruikers; en sodanige afslag word volledig beskryf en is van toepassing onder die omstandighede en onderhewig aan die voorwaardes soos hieronder uiteengesit.

Tyd-van-die-dag afslag**'n Afslag gebaseer op die tyd van die dag**

5.5 Die tyd-van-die-dag afslag gee afslag aan gebruikers wat op sekere tye van die GDVP-tolpaaie gebruik maak.

5.6 Onderhewig aan 5.9 hieronder is die tyd-van-die-dag afslag van toepassing op alle gebruikers van die GDVP tolpaaie in alle motorvoertuigklasse..

5.7 Die tyd-van-die-dag afslag word toegepas deurdat die Agentskap aftrek van die tarief wat die gebruiker normaalweg aanspreeklik is om te betaal vir die gebruik van die motorvoertuig op die GDVP-tolpaaie, die bedrag gelykstaande aan die persentasie van die standaardtarief, en sodanige persentasie is die persentasie wat ooreenstem met die tyd van die dag van gebruik van die motorvoertuig soos aangetoon in Tabel 4 vir die betrokke klas motorvoertuig.

5.8 Die Agentskap verminder die tarief met die afslag wat van toepassing is op die kategorie van gebruiker en voertuig. Dit is addisioneel tot enige ander afslag wat op daardie gebruiker van toepassing mag wees.

5.9 Die tyd-van-die-dag afslag is nie van toepassing op alternatiewe gebruikers wat na die verstryking van die betrokke grasietydperk betaal nie.

Tabel 4: Tyd-van-die-dag afslag

Tyd-van-die-dag afslag: Klasse A1 en A2				
Tyd van die dag	Weeksdag	Saterdag	Sondag	Openbare vakansiedag
Na 00:00 tot en met en insluitend 05:00	48.3% van standaard tarief verminder	48.3% van standaard tarief verminder	48.3% van standaard tarief verminder	48.3% van standaard tarief verminder
Na 05:00 tot en met en insluitend 06:00	19.3% van standaard tarief verminder			
Na 06:00 tot en met en insluitend 10:00	0% van standaard tarief verminder	29% van standaard tarief verminder	29% van standaard tarief verminder	
Na 10:00 tot en met en insluitend 14:00	9.7% van standaard tarief verminder			
Na 14:00 tot en met en insluitend 18:00	0% van standaard tarief verminder			
Na 18:00 tot en met en insluitend 23:00	19.3% van standaard tarief verminder	48.3% van standaard tarief verminder	48.3% van standaard tarief verminder	
Na 23:00 tot en met en insluitend 00:00	48.3% van standaard tarief verminder			

Tyd-van-die-dag afslag: Klasse B en C				
Tyd van die dag	Weeksdag	Saterdag	Sondag	Openbare vakansiedag
Na 00:00 tot en met en insluitend 05:00	57.9% van standaard tarief verminder	57.9% van standaard tarief verminder	57.9% van standaard tarief verminder	57.9% van standaard tarief verminder
Na 05:00 tot en met en insluitend 06:00	48.3% van standaard tarief verminder			
Na 06:00 tot en met en insluitend 08:30	0% van standaard tarief verminder	48.3% van standaard tarief verminder	48.3% van standaard tarief verminder	
Na 08:30 tot en met en insluitend 16:00	38.6% van standaard tarief verminder			
Na 16:00 tot en met en insluitend 18:00	0% van standaard tarief verminder			
Na 18:00 tot en met en insluitend 19:00	0% van standaard tarief verminder	57.9% van standaard tarief verminder	57.9% van standaard tarief verminder	
Na 19:00 tot en met en insluitend 23:00	48.3% van standaard tarief verminder			
Na 23:00 tot en met en insluitend 00:00	57.9% van standaard tarief verminder			

Afslag vir sekere gereelde gebruikers wat die maksimum drempel per maand bereik

- 5.10 Die gereelde gebruikerafslag is slegs van toepassing op geregistreerde e-tag gebruikers en geregistreerde VLN gebruikers.
- 5.11 Die gereelde gebruikerafslag is 'n afslag op die tarief soos in Kolom 3 van Tabel 1 (geregistreerde e-tag gebruikers) of Kolom 5 van Tabel 1 (geregistreerde VLN gebruikers) uiteengesit, soos van toepassing, en sodanige gereelde gebruikerafslag–
- 5.11.1 is gebaseer op hoe gereeld 'n geregistreerde e-tag gebruiker of 'n gereelde VLN gebruiker die GDVP-tolpaaie in 'n spesifieke motorvoertuig gedurende 'n kalendermaand gebruik;
- 5.11.2 is van toepassing waar die gereeldheid van gebruik van 'n motorvoertuig in 'n kalendermaand, wat uitgedruk word as die totale geldwaarde van alle e-tol transaksies wat aangegaan word deur 'n motorvoertuig in daardie kalendermaand, die drempel soos in Tabel 5 bepaal, bereik;
- 5.11.3 is op elke motorvoertuig wat die GDVP-tolpaaie gebruik, afsonderlik van toepassing;
- 5.11.4 is nie kumulatief op al die motorvoertuie wat 'n gebruiker op die GDVP-tolpaaie gedurende 'n kalendermaand gebruik, van toepassing nie;
- 5.11.5 word toegepas deurdat die Agentskap van die tarief soos in Kolom 3 van Tabel 1 (geregistreerde e-tag gebruikers) of Kolom 5 van Tabel 1 (geregistreerde VLN gebruikers), soos van toepassing, aangetoon, die waarde van die persentasie soos aangetoon in Tabel 5 van toepassing op die ooreenstemmende drempelwaarde, aftrek;
- 5.11.6 is slegs van toepassing op daardie transaksies of gedeeltes daarvan wat plaasvind wanneer die drempelwaarde bereik is en slegs vir die oorblywende gedeelte van daardie kalendermaand, maar verminder nie die aanspreeklikheid vir tol nadat aanspreeklikheid reeds ontstaan het voordat die drempel bereik is nie; en
- 5.11.7 maak nie die gebruiker geregtig om enige tol van die Agentskap terug te eis wat die gebruiker reeds betaal het of wat die gebruiker aanspreeklik is om te betaal, vir sy of haar gebruik van die tolpad nie.
- 5.12 Die waarde van die e-toltransaksies in 'n kalendermaand word bereken op die tariewe soos in Kolom 3 van Tabel 1 (geregistreerde e-tag gebruiker) of Kolom 5 van Tabel 1 (geregistreerde VLN gebruikers), soos van toepassing, aangetoon, minus enige tyd-van-die- dag afslag en enige ander toepaslike afslag.
- 5.13 Sodra die drempelwaarde soos aangetoon in die onderste ry van Tabel 5 bereik word vir die betrokke klas motorvoertuig, sal die gebruiker van daardie motorvoertuig wat daardie drempelwaarde bereik het vir die oorblywende gedeelte van daardie maand waarbinne die drempelwaarde bereik is, nie aanspreeklik wees vir enige verdere tol vir e-toltransaksies ten opsigte van daardie motorvoertuig nie, en dit word in Tabel 5 uitgedruk as 'n 100% afslag op alle verdere e-toltransaksies in daardie kalendermaand.

Tabel 5: Gereelde gebruikerafslag

Persentasie afslag van toepassing op e-toltransaksies (ingevolge paragrawe 5.10 tot 5.14)	Drempelwaarde van totale e-toltransaksies bereken teen die tarief soos aangetoon in Kolom 3 van Tabel 1 of Kolom 5 van Tabel 1, soos van toepassing vir die kalendermaand, verminder met die tyd-van-die-dag-afslag en enige ander toepaslike afslag			
	Klas A1 motorvoertuig	Klas A2 motorvoertuig	Klas B motorvoertuig	Klas C motorvoertuig
0% afslag	R 0 tot en met R 148.00	R 0 tot en met R 266.00	R 0 tot en met R1 035.00	R 0 tot en met R3 430.00
100% afslag	Bo R 148.00	Bo R 266.00	Bo R1 035.00	Bo R3 430.00

- 5.14 Die drempelwaardes vir die gereelde gebruiker soos uiteengesit in Tabel 5 word jaarliks in ooreenstemming met paragraaf 5.19 aangepas.
- 5.15 Onderhewig aan die nakoming van die vereistes vir die afslag vir gereelde gebruikers soos bedoel in paragrawe 5.10 tot 5.14, is die afslag vir gereelde gebruikers ook van toepassing op alternatiewe gebruikers met 'n geregistreerde e-tag of geregistreerde VLN wat binne die grasietydperk tol betaal.

Grasietydperk afslag vir alternatiewe gebruikers

- 5.16 'n Alternatiewe gebruiker wat gedurende die grasietydperk betaal is geregtig op 'n afslag in so 'n mate dat die gebruiker na afloop van die afslag die bedrag gelyk aan die bedrag in Kolom 2 van Tabel 1 betaal.

Afslag vir alternatiewe gebruikers na die grasietydperk

- 5.17 'n Alternatiewe gebruiker wat 'n tol betaal na die grasietydperk maar binne 30 dae vanaf die datum van 'n faktuur of kennisgewing uitgereik deur die Agentskap, sal 'n afslag toegestaan word ten tye van die betaling sodanig dat nadat die afslag toegestaan is, die alternatiewe gebruiker ten opsigte van 'n faktuur of kennisgewing waar betaling gemaak is, 'n bedrag gelykstaande aan 50% van die tarief in kolom 6 van Tabel 1 betaal.
- 5.18 Betaling deur 'n alternatiewe gebruiker aan die Agentskap, soos bedoel in 5.16 en 5.17 hierbo, moet onderhewig aan die voorwaardes wat die Agentskap bepaal en bekend maak, gedoen word.

Aanpassing van tariewe en bedrae

- 5.19 Die tariewe wat in hierdie kennisgewing vertoon word mag deur 'n bepaling van die Minister jaarliks aangepas word: Met dien verstande dat sodanige aanpassing nie die verhoging in die verbruikersprysindeks vir die vorige 12 maande bereken, oorskry nie.

Printed by and obtainable from the Government Printer, Bosman Street, Private Bag X85, Pretoria, 0001
Contact Centre Tel: 012-748 6200. eMail: info.egazette@gpw.gov.za
Publications: Tel: (012) 748 6053, 748 6061, 748 6065